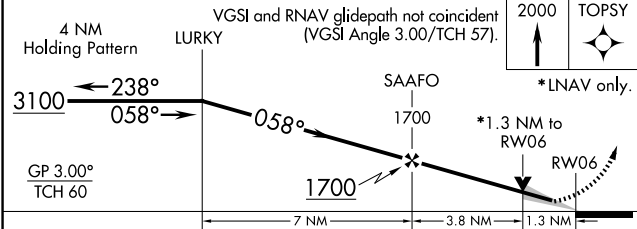
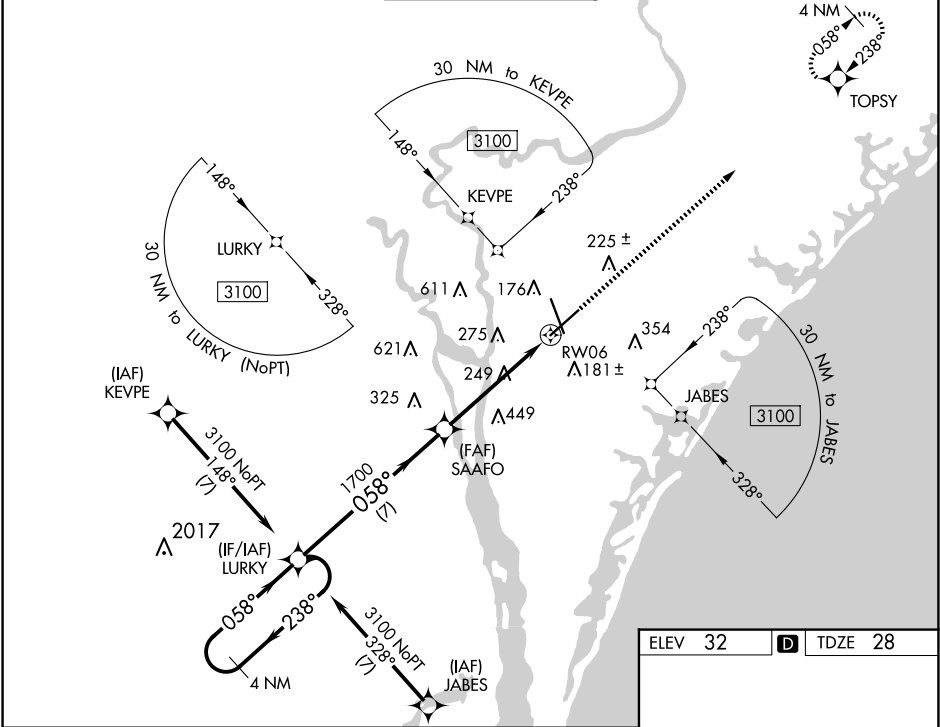


WAAS CH <b>86599</b> <b>W06A</b>	APP CRS <b>058°</b>	Rwy Idg TDZE <b>28</b> Apt Elev <b>32</b>	<b>8016</b>
--	------------------------	---	-------------

RNAV (GPS) RWY 6

WILMINGTON INTL (ILM)

<div><div><div></div><div></div></div></div> <div>For uncompensated Baro-VNAV systems, LNAV/VNAV NA below -7°C (20°F) or above 54°C (130°F). DME/DME RNP-0.3 NA.</div>		MISSED APPROACH: Climb to 2000 direct TOPSY and hold.			
ATIS 124.975	WILMINGTON APP CON★ 118.25 284.65 (164°-343°) 135.75 317.425 (344°-163°)	WILMINGTON TOWER★ 119.9 (CTAF) 0 239.3	GND CON 121.9 348.6	CLNC DEL 120.875	UNICOM 122.95



CATEGORY	A	B	C	D
LPV DA	228/40 200 (200-¾)			
LNAV/VNAV DA	434/60 406 (500-1¼)			
LNAV MDA	500/55 472 (500-1)		500-1¾ 472 (500-1¾)	
CIRCLING	560-1 528 (600-1)		720-2 688 (700-2) 920-3 888 (900-3)	

