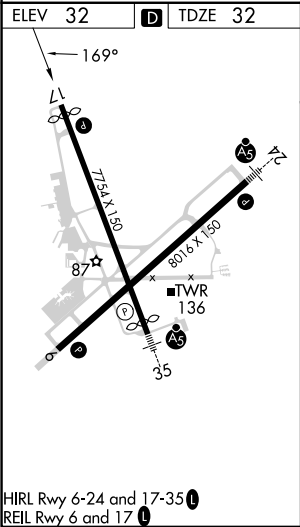
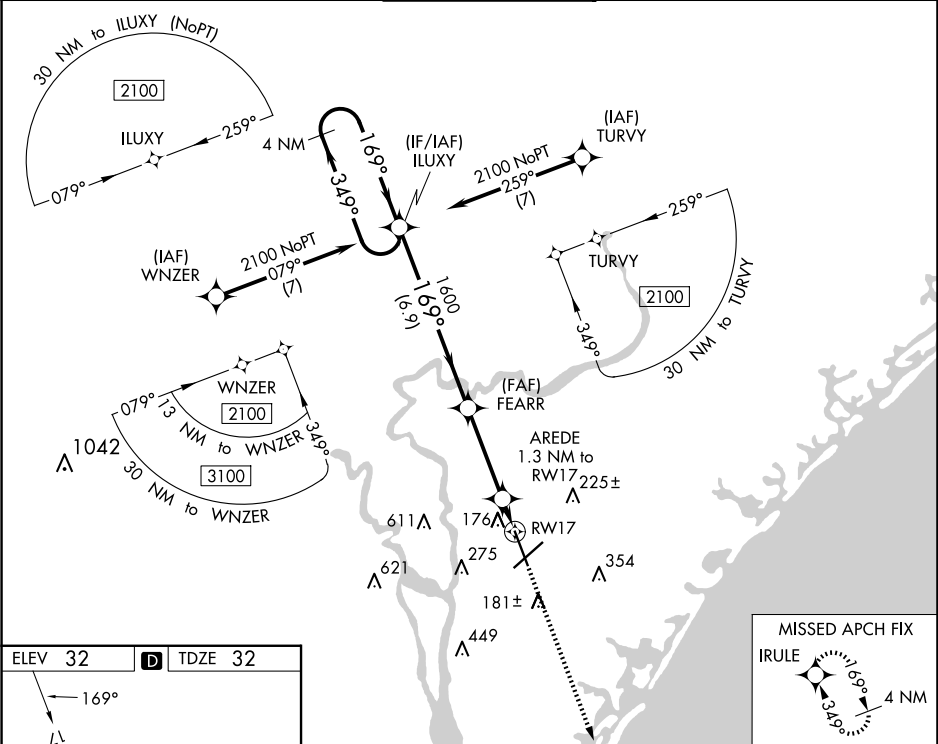


WAAS CH 90499 W17A	APP CRS 169°	Rwy Idg 6604 TDZE 32 Apt Elev 32
--	------------------------	---

RNAV (GPS) RWY 17

WILMINGTON INTL (ILM)

<div><div></div><div></div></div>	For uncompensated Baro-VNAV systems, LNAV/VNAV NA below -7°C (20°F) or above 54°C (130°F). DME/DME RNP-0.3 NA. Rwy 17 helicopter visibility reduction below ¾ SM NA.		MISSED APPROACH: Climb to 1700 direct IRULE and hold.		
ATIS 124.975	WILMINGTON APP CON★ 118.25 284.65 (164°-343°) 135.75 317.425 (344°-163°)	WILMINGTON TOWER★ 119.9 (CTAF) 0 239.3	GND CON 121.9 348.6	CLNC DEL 120.875	UNICOM 122.95



4 NM Holding Pattern		ILUXY	FEARR	AREDE	RW17
2100		349°	169°	1600	1700
GP 3.00°		TCH 50	1600	1.3 NM to RW17	1.3 NM
CATEGORY		A	B	C	D
LPV DA		369-1½ 337 (400-1½)			
LNAV/VNAV DA		405-1¼ 373 (400-1¼)			
LNAV MDA		420-1 388 (400-1)		420-1½ 388 (400-1½)	
CIRCLING		560-1 528 (600-1)		720-2 688 (700-2)	
				920-3 888 (900-3)	