

LOC/DME I-GNM  
**109.95**  
Chan **36** (Y)

APP CRS  
**058°**

Rwy Idg  
TDZE **28**  
Apt Elev **32**

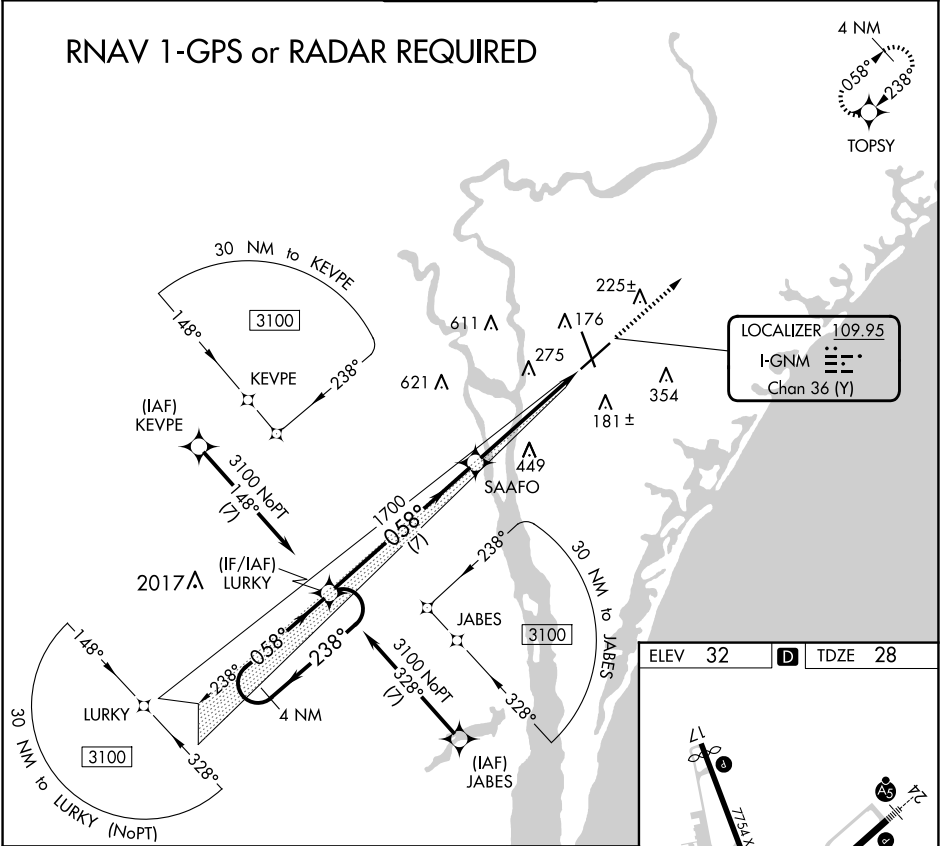
ILS Z RWY 6  
WILMINGTON INTL (ILM)

▼

RNAV 1-GPS required.

MISSED APPROACH: Climb to 2000 direct TOPSY and hold.

ATIS <b>124.975</b>	WILMINGTON APP CON★ <b>118.25 284.65</b> (164°-343°) <b>135.75 317.425</b> (344°-163°)	WILMINGTON TOWER★ <b>119.9</b> (CTAF) <b>0 239.3</b>	GND CON <b>121.9 348.6</b>	CLNC DEL <b>120.875</b>	UNICOM <b>122.95</b>
------------------------	--	---	-------------------------------	----------------------------	-------------------------



4 NM Holding Pattern LURKY

3100 ← 238°  
058° →

GS 3.00°  
TCH 60

058°

1700

7 NM

5.1 NM

2000 TOPSY

VGSI and ILS glidepath not coincident (VGSI Angle 3.00/TCH 57).

2000 TOPSY

CATEGORY	A	B	C	D
S-ILS 6	228/40 200 (200-¾)			

HIRL Rwy 6-24 and 17-35  
REIL Rwy 6 and 17