

LOC I-GMX

111.55

APP CRS

238°

Rwy Idg

8016

TDZE

26

Apt Elev

32

ILS Z RWY 24

WILMINGTON INTL (ILM)

RNAV 1-GPS required.

**RVR 1800 authorized with use of FD or AP or HUD to DA.

MALSR

MISSED APPROACH: Climb to 3100 direct LURKY and hold.

ATIS

124.975

WILMINGTON APP CON★

118.25 284.65 (164°-343°)

135.75 317.425 (344°-163°)

WILMINGTON TOWER★

119.9 (CTAF) 0 239.3

GND CON

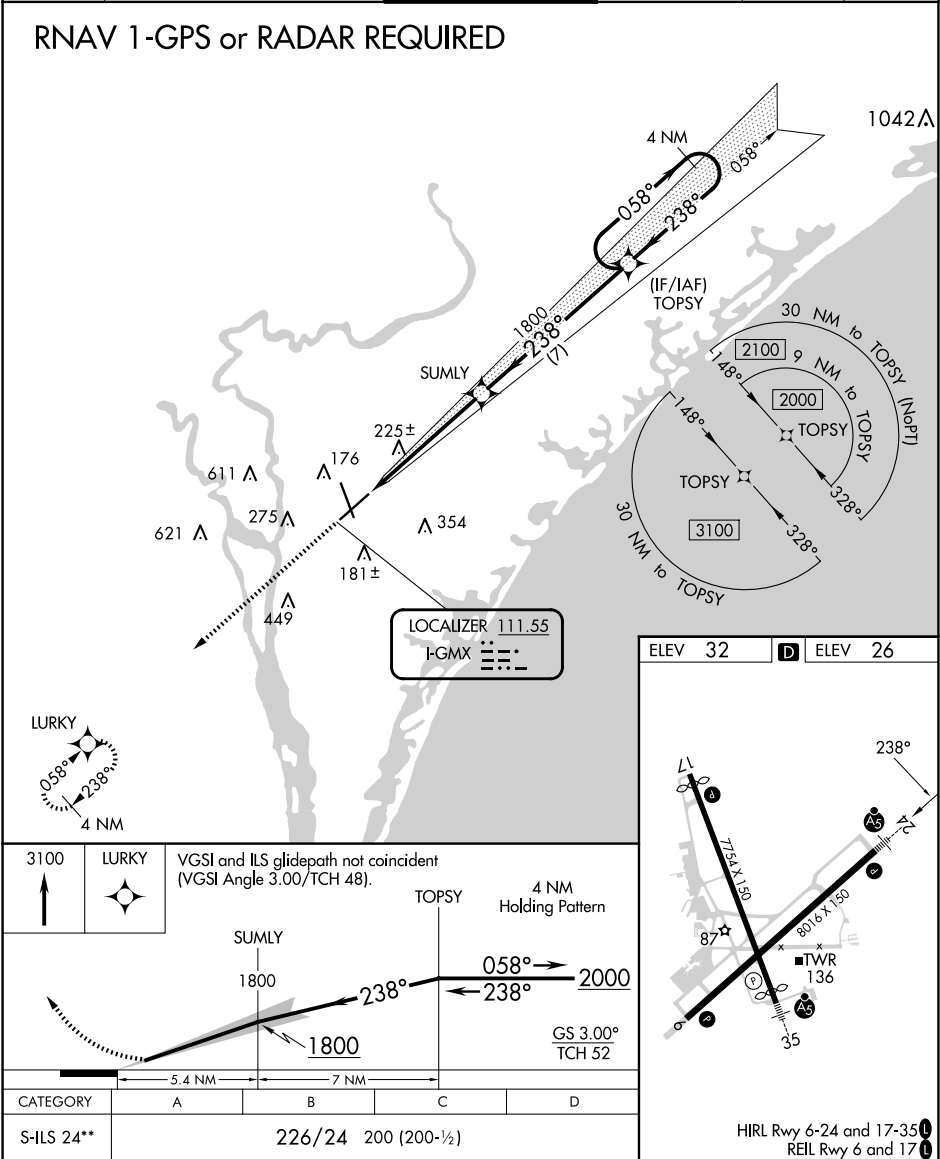
121.9 348.6

CLNC DEL

120.875

UNICOM

122.95



SE-2, 07 AUG 2025 to 04 SEP 2025

SE-2, 07 AUG 2025 to 04 SEP 2025