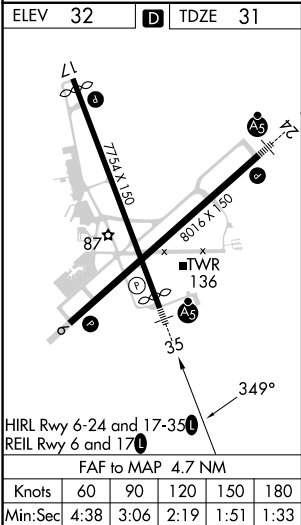
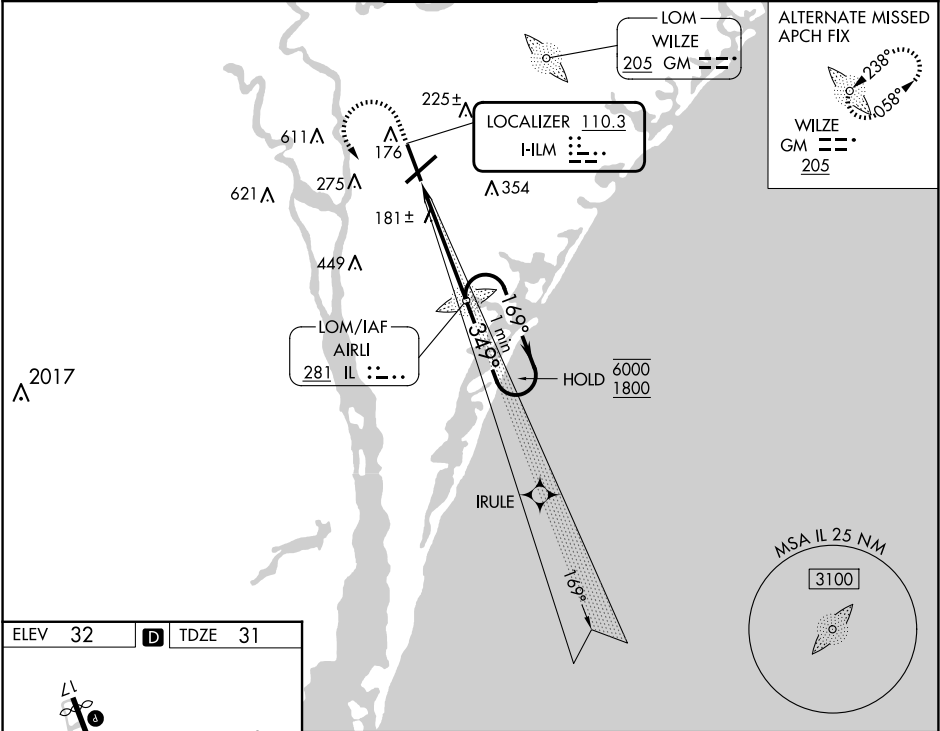


LOC I-ILM 110.3	APP CRS 349°	Rwy Idg TDZE Apt Elev 7204 31 32
---------------------------	------------------------	--

ILS Y or LOC RWY 35

WILMINGTON INTL (ILM)

ADF required. RADAR required for procedure entry.		MALSR 	MISSED APPROACH: Climb to 600 then climbing left turn to 1800 direct AIRL LOM and hold.		
For inop ALS, increase S-LOC 35 Cat C/D visibility to 1½ SM.					
ATIS 124.975	WILMINGTON APP CON★ 118.25 284.65 (164°-343°) 135.75 317.425 (344°-163°)	WILMINGTON TOWER★ 119.9 (CTAF) 0 239.3	GND CON 121.9 348.6	CLNC DEL 120.875	UNICOM 122.95



					IL LOM 1576		One Minute Holding Pattern					
		4.7 NM										
CATEGORY	A	B	C	D								
S-ILS 35	242/24 211 (300-½)											
S-LOC 35	500/24 469 (500-½)			500/50 469 (500-1)								
<input checked="" type="checkbox"/> CIRCLING	560-1 528 (600-1)			720-2 688 (700-2)		920-3 888 (900-3)						