

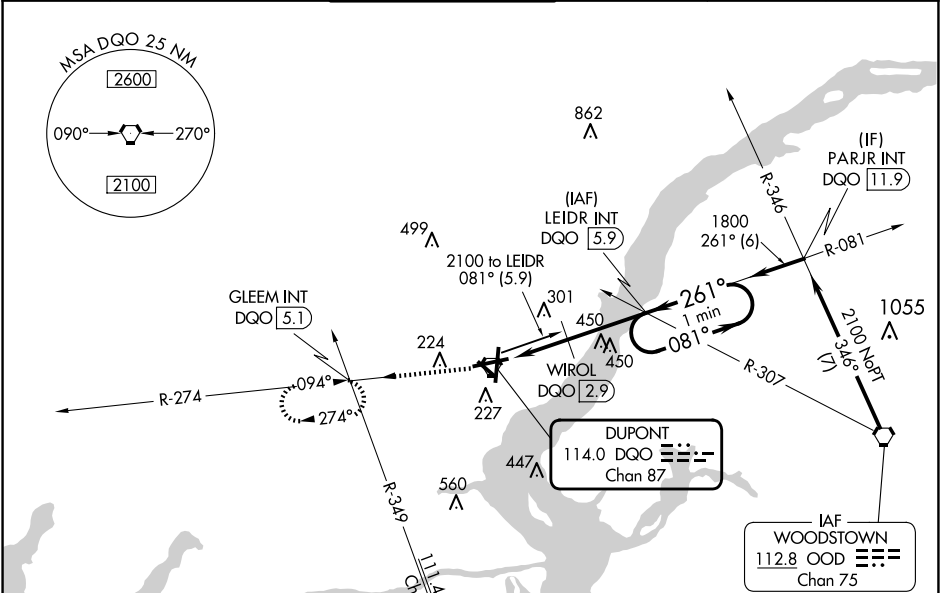
VORTAC DQO	APP CRS	Rwy Idg	7000
114.0	261°	TDZE	72
Chan 87		Apt Elev	80

VOR RWY 27
NEW CASTLE (ILG)

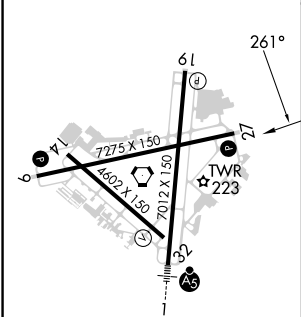
⚠ Helicopter visibility reduction below ¾ SM NA. When local altimeter setting not received, use Philadelphia Intl altimeter setting and increase all MDAs 60 feet; increase S-27 Cat B and Circling Cat C/D visibility ¼ SM and S-27 Cat C/D visibility ½ SM; WIROL fix minimums S-27 increase Cat C/D and Circling Cat D visibility ¼ SM.

MISSED APPROACH: Climb to 2000 on DQO VORTAC R-274 to GLEEM INT/DQO 5.1 DME and hold.

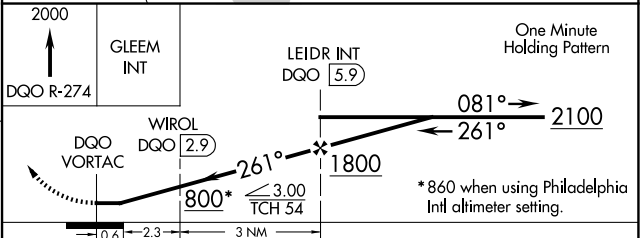
ATIS 123.95	PHILADELPHIA APP CON 118.35 323.1	WILMINGTON TOWER ★ 126.0 (CTAF) 352.05	GND CON 121.7 275.8	CLNC DEL 119.95	UNICOM 122.95
----------------	--------------------------------------	---	------------------------	--------------------	------------------



ELEV 80	D	TDZE 72
---------	---	---------



REIL Rwy 9, 19 and 27	1
HIRL Rwy 1-19 and 9-27	1
MIRL Rwy 14-32	1
FAF to MAP 5.9 NM	
Knots	60 90 120 150 180
Min:Sec	5:54 3:56 2:57 2:22 1:58



CATEGORY	A	B	C	D
S-27	800-1 728 (800-1)		800-2 728 (800-2)	
CIRCLING	800-1 720 (800-1)		800-2 720 (800-2)	800-2 720 (800-2½)
WIROL FIX MINIMUMS (DME REQUIRED)				
S-27	560-1 488 (500-1)		560-1½ 488 (500-1½)	
CIRCLING	560-1 480 (500-1)		600-1½ 520 (600-1½)	800-2¼ 720 (800-2¼)

NE-3, 07 AUG 2025 to 04 SEP 2025

NE-3, 07 AUG 2025 to 04 SEP 2025