

WAAS CH 82115 W19A	APP CRS 195°	Rwy Idg 7012 TDZE 71 Apt Elev 80
--	------------------------	---

RNAV (GPS) RWY 19

NEW CASTLE (ILG)

⚠

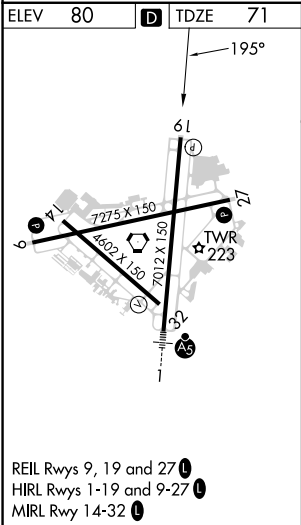
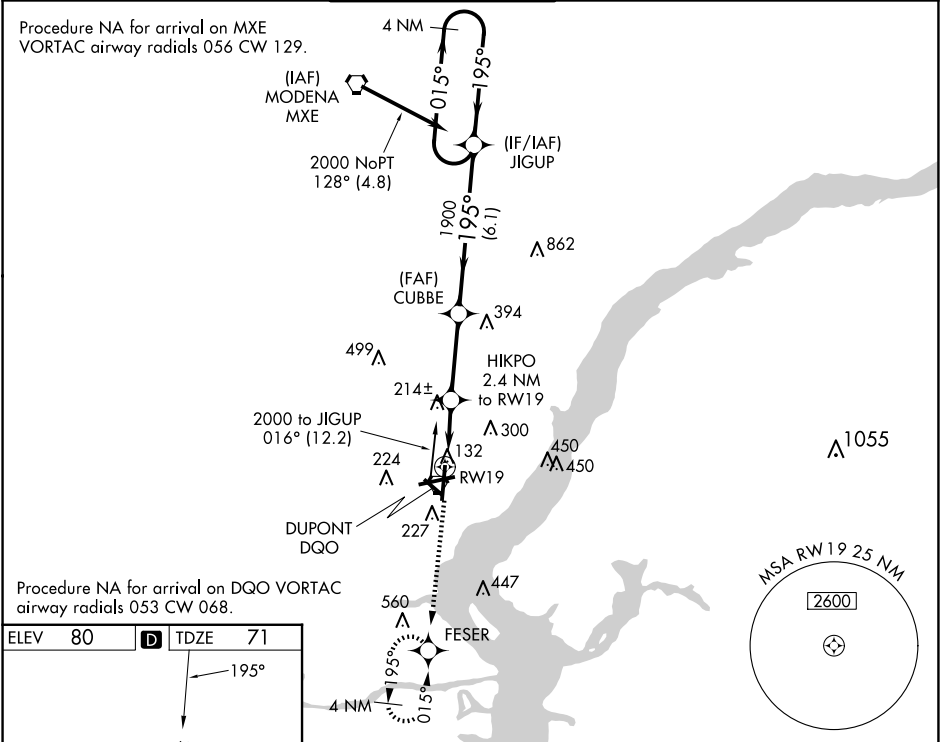
Baro-VNAV NA when using Philadelphia Intl altimeter setting. For uncompensated Baro-VNAV systems, LNAV/VNAV NA below -15°C (5°F) or above 49°C (120°F). DME/DME RNP-0.3 NA.


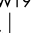
⚠

Visibility reduction by helicopters NA. When local altimeter setting not received, use Philadelphia Intl altimeter setting: increase LPV DA to 425, LNAV/VNAV DA to 592, and all MDAs 60 feet; increase LPV all Cats and LNAV and Circling Cat D visibility ¼ SM.

MISSED APPROACH:
Climb to 2000 direct
FESER and hold.

ATIS 123.95	PHILADELPHIA APP CON 118.35 323.1	WILMINGTON TOWER ★ 126.0 (CTAF) 352.05	GND CON 121.7 275.8	CLNC DEL 119.95	UNICOM 122.95
-----------------------	---	---	-------------------------------	---------------------------	-------------------------



2000 ↑		FESER 		4 NM Holding Pattern	
* LNAV only.		HIKPO 2.4 NM to RW19		CUBBE	
RW19 		880*		1900	
2.4 NM		3.1 NM		6.1 NM	
CATEGORY		A		B	
LPV DA		371-1		300 (300-1)	
LNAV/VNAV DA		538-1¾		467 (500-1¾)	
LNAV MDA		480-1		409 (400-1)	
CIRCLING		540-1 460 (500-1)		560-1 480 (500-1)	
		480-1¼		409 (400-1¼)	
		600-1½ 520 (600-1½)		800-2¼ 720 (800-2¼)	

NE-3, 07 AUG 2025 to 04 SEP 2025

NE-3, 07 AUG 2025 to 04 SEP 2025