

WAAS CH 82140 W27A	APP CRS 267°	Rwy Ldg TDZE 527 Apt Elev 528	6063
--	------------------------	---	-------------

RNAV (GPS) RWY 27
WILLIAMSPORT RGNL (IPT')

A

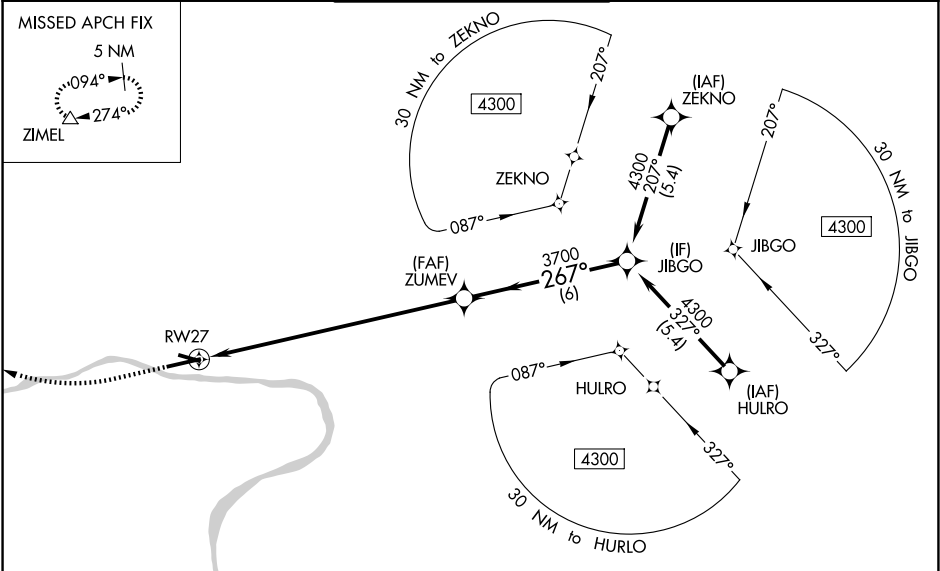
-13°C

For uncompensated Baro-VNAV systems, LNAV/VNAV NA below -17°C (2°F) or above 54°C (130°F). Circling NA S of Rwy 9 and SW of Rwy 30. Circling Rwy 12, 30 NA at night. Rwy 27 helicopter visibility reduction below ¾ SM NA. DME/DME RNP-0.3 NA. For inop ALS, increase LPV all Cats visibility to ¾ SM. Inop table does not apply to LPV DA# all Cats and LNAV Cats C and D.

MALSR

MISSED APPROACH: (Do not exceed 210K until ZIMEL) Climb to 980 then climbing right turn to 4500 direct ZIMEL and hold, continue climb-in-hold to 4500. #Missed approach requires minimum climb of 353 feet per NM to 1300.

ASOS 125.225	NEW YORK CENTER 124.9	WILLIAMSPORT TOWER ★ 119.1 (CTAF) 257.8	GND CON 121.9	UNICOM 122.95
------------------------	---------------------------------	---	-------------------------	-------------------------



ELEV 528

D

TDZE 527

980

4500

ZIMEL

* LNAV only.

RW27

5.3 NM to RW27

ZUMEV

3700

JIBGO

4300

GP 3.00°

TCH 48

267°

12

4273 X 150

6825 X 150

30

27

5.3 NM

4.5 NM

6 NM

CATEGORY

A

B

C

D

LPV DA#

777-¾

250 (300-¾)

LPV DA

811-¾

284 (300-¾)

LNAV/VNAV DA

1296-2½

769 (800-2½)

LNAV MDA

2280-¾

1753 (1800-¾)

2280-1

1753 (1800-1)

2280-3

1753 (1800-3)

CIRCLING

2280-1¼

1752 (1800-1¼)

2280-1½

1752 (1800-1½)

2280-3

1752 (1800-3)

REIL Rwy 9

MIRL Rwy 12-30

HIRL Rwy 9-27