

WAAS CH <b>45824</b> <b>W25A</b>	APP CRS <b>246°</b>	Rwy Idg <b>3375</b> TDZE <b>544</b> Apt Elev <b>544</b>
--	------------------------	---

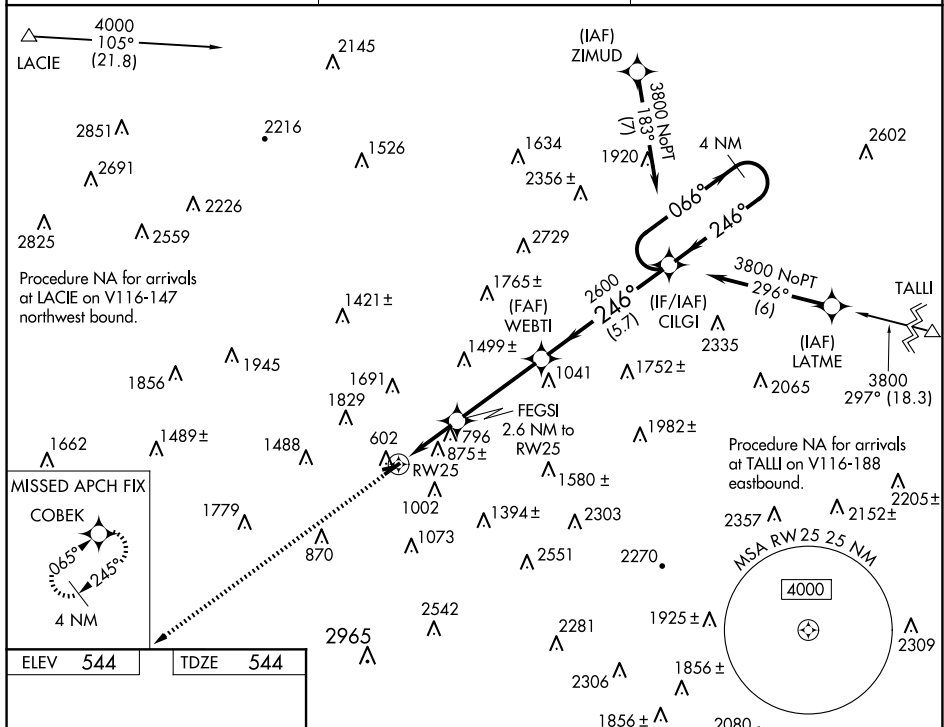
RNAV (GPS) RWY 25  
WILKES-BARRE WYOMING VALLEY (WBW)

RNP APCH - GPS.

**T** Circling NA to Rwy 9 and 27. Rwy 25 helicopter visibility reduction below  $\frac{3}{4}$  SM NA.  
**A** NA Baro-VNAV NA. Use AVP altimeter setting. Circling NA NW of Rwy 7-25.

**MISSED APPROACH:**  
Climb to 3700 direct  
COBEK and hold.

AVP ASOS <b>135.75</b>	WILKES-BARRE APP CON <b>126.3 256.7</b>	UNICOM <b>122.8</b> (CTAF) <b>0</b>
---------------------------	--	--



CATEGORY	A	B	C	D
LPV DA	NA			
LNAV/VNAV DA	NA			
LNAV MDA	1240-1 696 (700-1)		NA	
CIRCLING	1320-1 776 (800-1)		1380-1 ¼ 836 (900-1 ¼)	