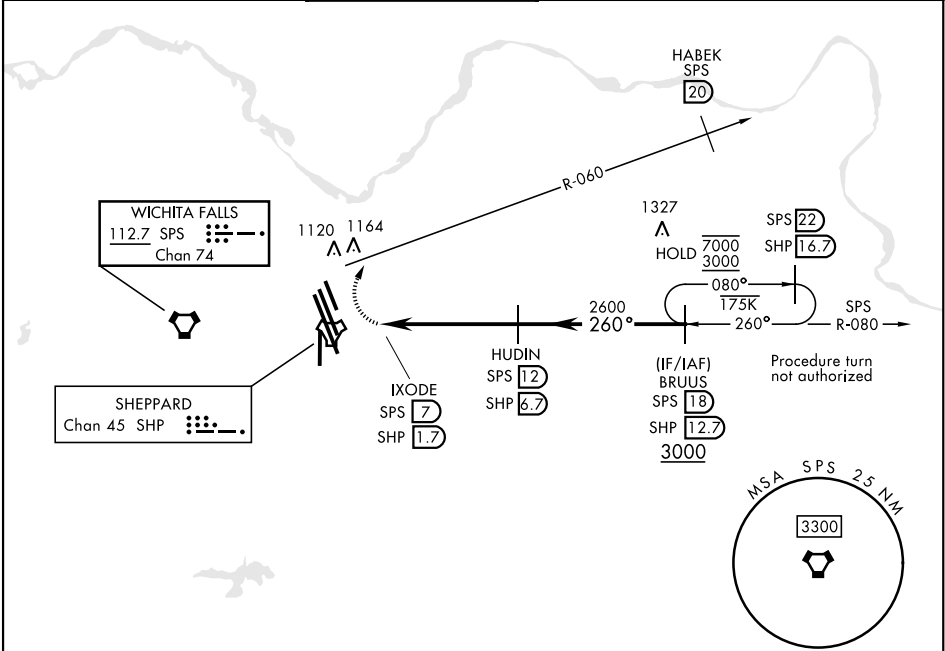
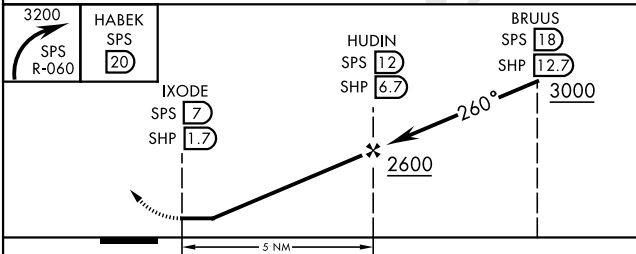


VORTAC SPS 112.7 Chan 74	APCH CRS 260°	Rwy Idg TDZE Arpt Elev N/A N/A 1019	[USAF]	SHEPPARD AFB/WICHITA FALLS MUNI (KSPS)		
RADAR required ▼ * Circling not authorized W of Rwy 15R-33L.			MISSED APPROACH: Climbing right turn to 3200, intcp SPS VORTAC R-060 to 20 DME (HABEK). Expect RADAR vectors.			
ATIS ★ 132.05 269.9	APP CON 118.2 269.025	TOWER ★ 119.75 0 279.525 (CTAF)	GND CON 125.5 289.4	CLNC DEL 121.2 282.225	ASR	



EMERG SAFE ALT 100 NM 4600



CATEGORY	A	B	C	D	E
CIRCLING*	1480-17½	461	(500-17½)	2100-3 1081	(1100-3)

