

WICHITA FALLS, TEXAS

RNAV (GPS) RWY 33L

APCH CRS 333°	Rwy Idg 13,100 TDZE 1000 Arpt Elev 1019
-------------------------	--

[USAF]

SHEPPARD AFB/WICHITA FALLS MUNI (KSPS)

RNP APCH - GPS

T * When ALS inop, increase vis to $\frac{3}{4}$ mile.
 ** When ALS inop, increase vis to 1 mile.
 *** Circling not authorized SW of Rwy 15R-33L.

MALSR

MISSED APPROACH: Climb to 3300 direct
BAILE, track 333° to CEKAP and hold.

ATIS ★
132.05 269.9

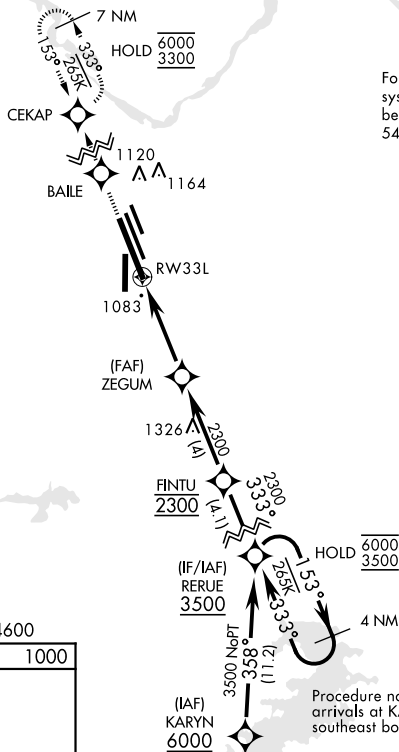
APP CON
118.2 269.025

TOWER★
119.750 279.525(CTAF)

GND CON
125.5 289.4

CLNC DEL
121.2 282.225

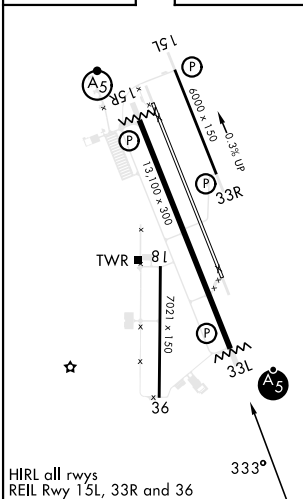
ASR



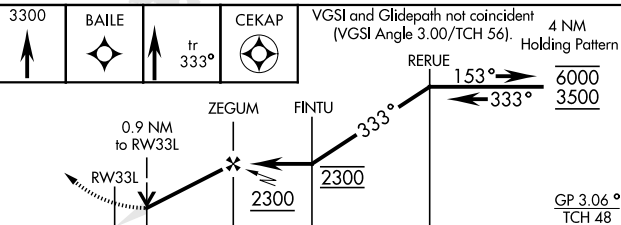
For uncompensated Baro-VNAV systems, procedure not authorized below -17°C (2°F) or above 54°C (130°F).

EMERG SAFE ALT 100 NM 4600

ELEV	1019		TDZE	1000
------	------	--	------	------



HIRL all rwys
REIL Rwy 15L, 33R and 36



CATEGORY	A	B	C	D	E
INAV/VNAV DA *	1255-½		255		(300-½)
INAV MDA **	1340-½		340		(400-½)
CIRCLING ***	1440-1 421 (500-1)	1480-1 461 (500-1)	1480-1½ 461 (500-1½)	2100-3	1081 (1100-3)

WICHITA FALLS, TEXAS

33°59'N-98°30'W

SHEPPARD AFB/WICHITA FALLS MUNI (KSPS)

RNAV (GPS) RWY 33L

SC-2, 07 AUG 2025 to 04 SEP 2025

SC-2, 07 AUG 2025 to 04 SEP 2025