

WICHITA FALLS, TEXAS

## RNAV (GPS) RWY 15R

APCH CRS <b>153°</b>	Rwy Idg <b>13,100</b> TDZE <b>998</b> Arpt Elev <b>1019</b>
-------------------------	---

[USAF]

SHEPPARD AFB/WICHITA FALLS MUNI (KSPS)

RNP APCH - GPS

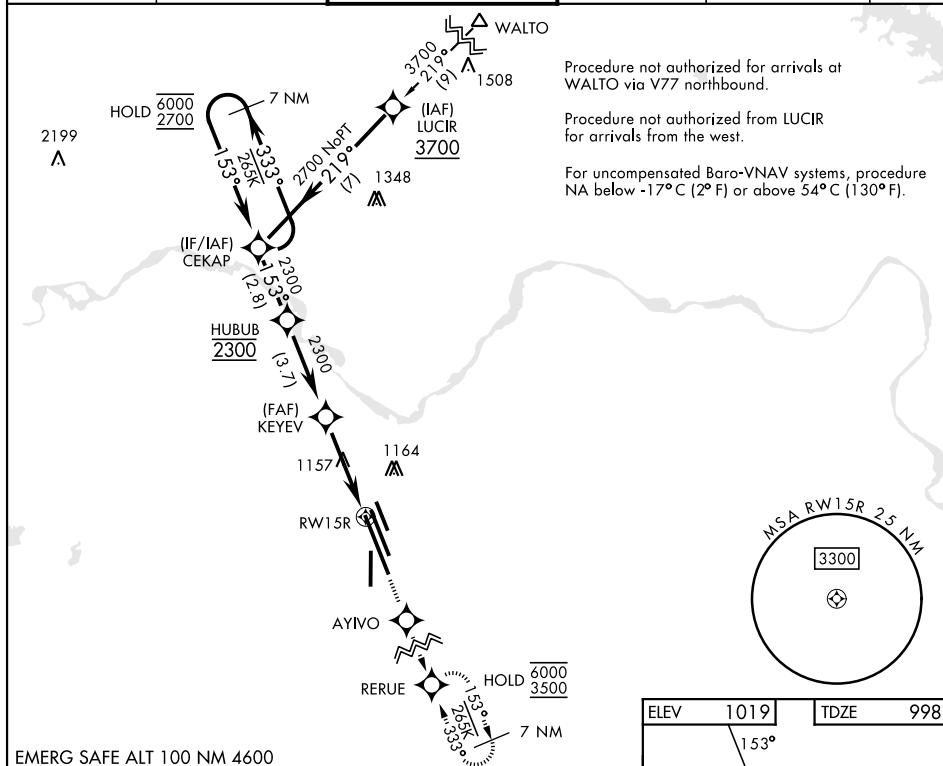
**T** \* When ALS inop, increase CAT AB vis to  $\frac{3}{4}$  mile; CAT CDE vis to  $\frac{7}{8}$  mile.  
 \*\* When ALS inop, increase CAT AB vis to 1 mile; CAT CDE vis to  $1\frac{1}{4}$  miles.  
 \*\*\* Circling not authorized West of Rwy 15R-33L.

MALSR

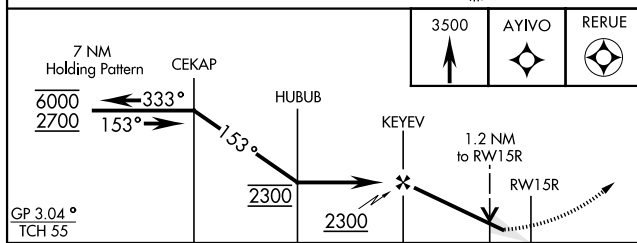


**MISSED APPROACH:** Climb to 3500 direct AYIVO and via 153° track to RERUE and hold.

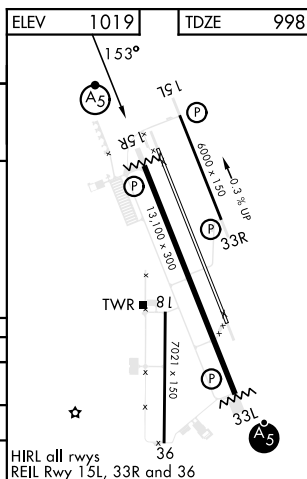
ATIS ★	APP CON	TOWER ★	GND CON	CLNC DEL	ASR
132.05 269.9	118.2 269.025	119.75 0 279.525 (CTAF)	125.5 289.4	121.2 282.225	



EMERG SAFE ALT 100 NM 4600



CATEGORY	A	B	C	D	E
LNAP/VNAP DA *	1249-½ 251 (300-½)	1252-½ 254 (300-½)	1260-½ 262 (300-½)	1271-½	273 (300-½)
LNAP MDA **	1420-½	422 (500-½)	1420-¾	422	(500-¾)
CIRCLING ***	1420-1 401 (500-1)	1480-1 461 (500-1)	1480-1½ 461 (500-1½)	2100-3	1081 (1100-3)



WICHITA FALLS, TEXAS

33°59'N-98°30'W

SHEPPARD AFB/WICHITA FALLS MUNI (KSPS)

Amdt 5 23JAN25

## RNAV (GPS) RWY 15R

SC-2, 07 AUG 2025 to 04 SEP 2025