

WICHITA FALLS, TEXAS

RNAV (GPS) RWY 15L

APCH CRS 153°	Rwy Idg 6000 TDZE 1019 Arpt Elev 1019
-------------------------	--

[USAF]

SHEPPARD AFB/WICHITA FALLS MUNI (KSPS)

RNP APCH - GPS

MISSED APPROACH: Climb and maintain 3100, track 153° direct DUKLE and hold.

T *Circling not authorized West of Rwy 15R/33L.

ATIS ★
132.05 269.9

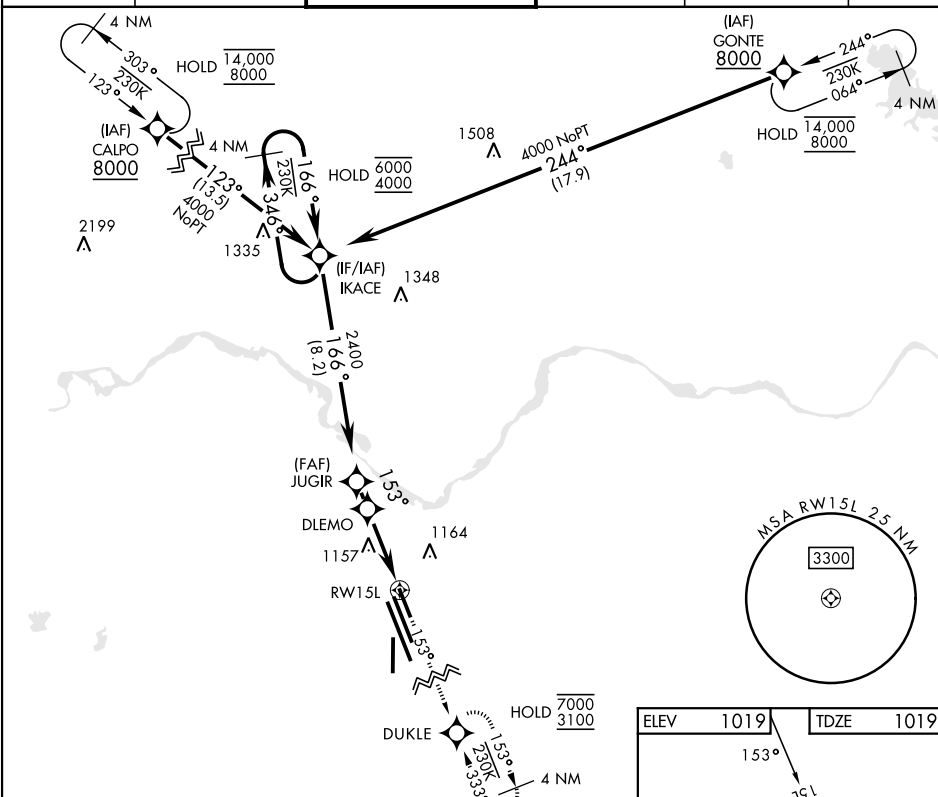
APP CON
118.2 269.025

TOWER ★
119.75 0 279.525 (CTAF)

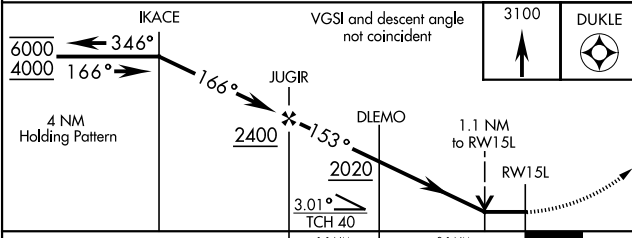
GND CON
125.5 289.4

CLNC DEL
121.2 282.225

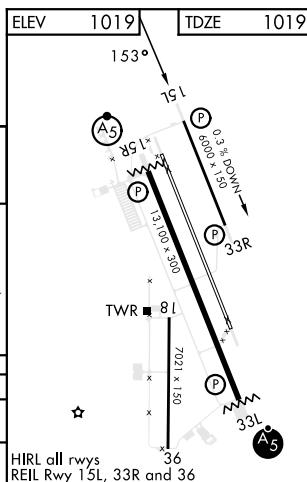
ASR



EMERG SAFE ALT 100 NM 4600



CATEGORY	A	B	C	D	E
INAV MDA	NA	1420-1 401 (500-1)	1420-1½ 401 (500-1½)		NA
CIRCLING *	NA	1480-1 461 (500-1)	1480-1½ 461 (500-1½)	2100-3 1081(1100-3)	NA



WICHITA FALLS, TEXAS

33°59'N-98°30'W

SHEPPARD AFB/WICHITA FALLS MUNI (KSPS)

Amdt 3 23JAN25

RNAV (GPS) RWY 15L

SC-2, 07 AUG 2025 to 04 SEP 2025