

WICHITA FALLS, TEXAS

ILS or LOC/DME Y RWY 33L

LOC/DME I-SPS <b>109.7</b> Chan <b>34</b>	APCH CRS <b>333°</b>	Rwy Idg 33L <b>13,100</b> 33C <b>10,003</b> TDZE 33L <b>1000</b> 33C <b>989</b> Arpt Elev <b>1019</b>
---	-------------------------	---

[USAF]

SHEPPARD AFB/  
WICHITA FALLS MUNI (KSPS)

**T** \* When ALS inop, increase vis to  $\frac{3}{4}$  mile.  
 \*\* When ALS inop, increase vis to 1 mile.  
 \*\*\* When ALS inop, increase CAT AB vis to 1 mile;  
 CAT CDE vis to  $1\frac{1}{2}$  miles.

Rwy 3  
MALS  
A5

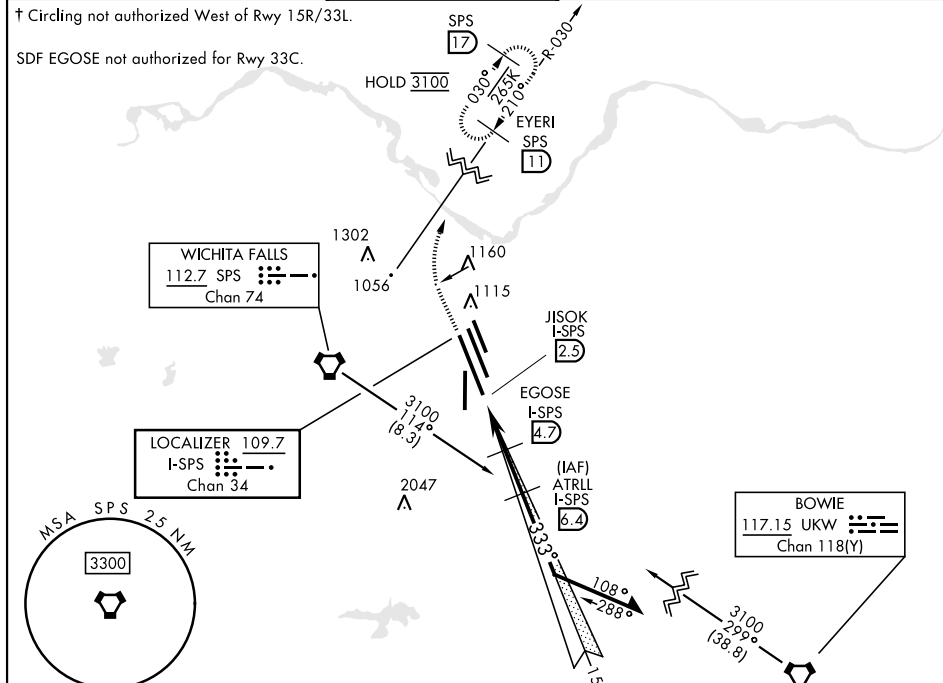
Rwy 33C  
ALSF-1

**MISSED APPROACH:** Climb to 2200, then climbing right turn to 3100 via SPS VORTAC R-030 to EYER (SPS R-030/11) and hold.

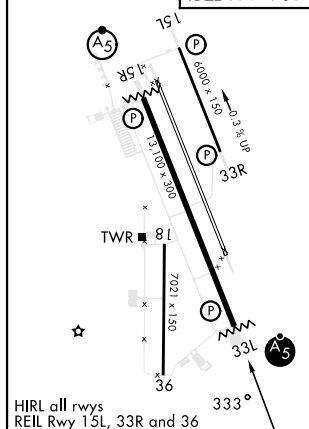
ATIS ★	APP CON	TOWER ★	GND CON	CLNC DEL	ASR
132.05 269.9	118.2 269.025	119.75 0 279.525 (CTAF)	125.5 289.4	121.2 282.225	

† Circling not authorized West of Rwy 15R/33L.

SDF EGOSE not authorized for Rwy 33C.

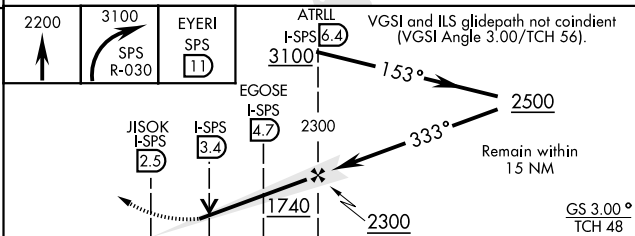


ELEV	1019	TDZE 33L 1000
		TDZE 33C 989



EMERG SAFE ALT 100 NM 4600

VGSI and ILS glidepath not coincident  
(VGSI Angle 3.00/TCH 56).



CATEGORY	A	B	C	D	E
S-ILS 33L *	1200-½		200	(200-½)	
S-LOC 33L **	1340-½		340	(400-½)	
SIDESTEP 33C ***	1440-½	451 (500-½)	1440-¾	451 (500-¾)	
CIRCLING†	1440-1 421 (500-1)	1480-1 461 (500-1)	1480-1½ 461 (500-1½)	2100-3	1081 (1100-3)

WICHITA FALLS, TEXAS

33°59'N-98°30'W

SHEPPARD AFB/WICHITA FALLS MUNI (KSPS)

ILS or LOC/DME Y RWY 33L

SC-2, 07 AUG 2025 to 04 SEP 2025

SC-2, 07 AUG 2025 to 04 SEP 2025