

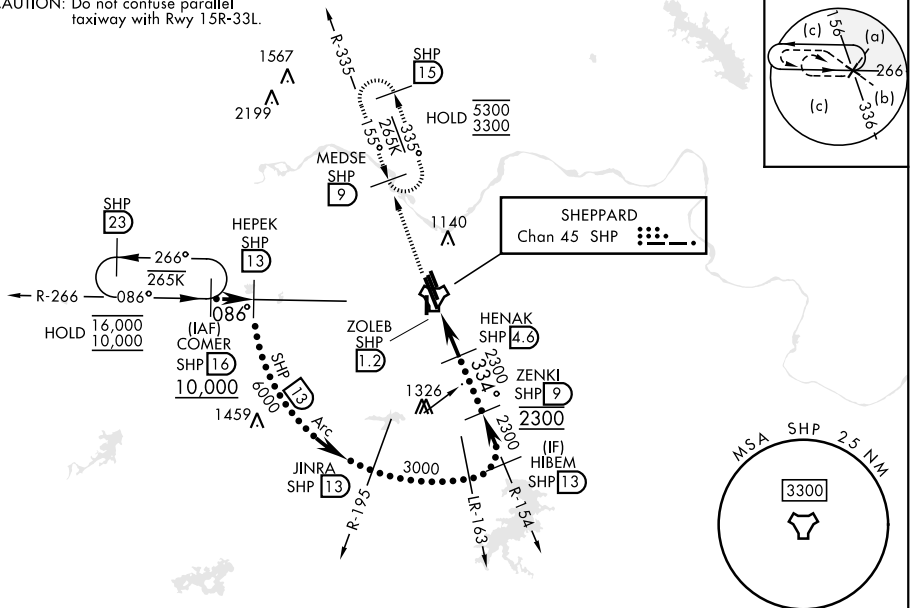
WICHITA FALLS, TEXAS

HI-TACAN RWY 33L

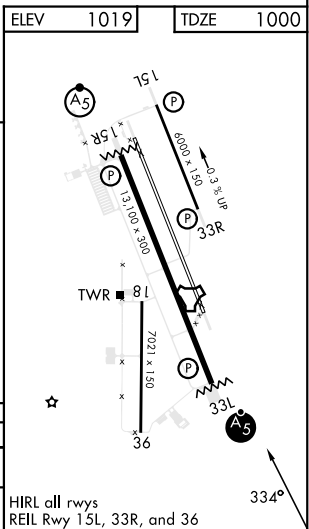
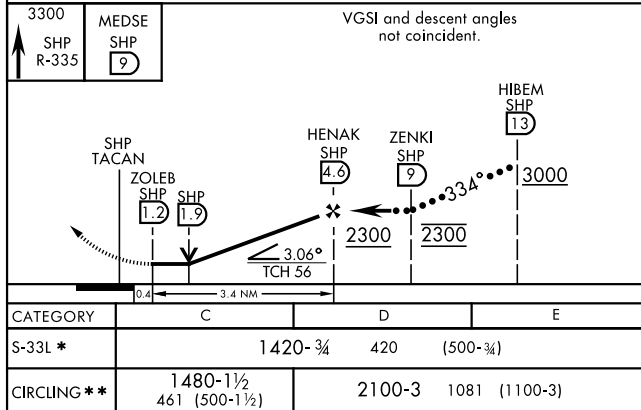
TACAN Chan 45	APCH CRS 334°	Rwy ldg 13,100 TDZE 1000 Arpt Elev 1019	[USAF]	SHEPPARD AFB/WICHITA FALLS MUNI (KSPS)
* When ALS inop, increase CAT CDE vis to 1½ miles. ** Circling not authorized W of Rwy 15R-33L.			MALSR A5	MISSED APPROACH: Climb and maintain 3300, intercept SHP TACAN R-335 to SHP R-335/9 DME (MEDSE) and hold.

ATIS★ 132.05 269.9	APP CON 118.2 269.025	TOWER★ 119.75 0 279.525 (CTAF)	GND CON 125.5 289.4	CLNC DEL 121.2 282.225	ASR
------------------------------	---------------------------------	--	-------------------------------	----------------------------------	-----

CAUTION: Do not confuse parallel taxiway with Rwy 15R-33L.



EMERG SAFE ALT 100 NM 4600



WICHITA FALLS, TEXAS 33°59'N-98°30'W SHEPPARD AFB/WICHITA FALLS MUNI (KSPS)

Amtd 6 23JAN25

HI-TACAN RWY 33L

SC-2, 07 AUG 2025 to 04 SEP 2025