
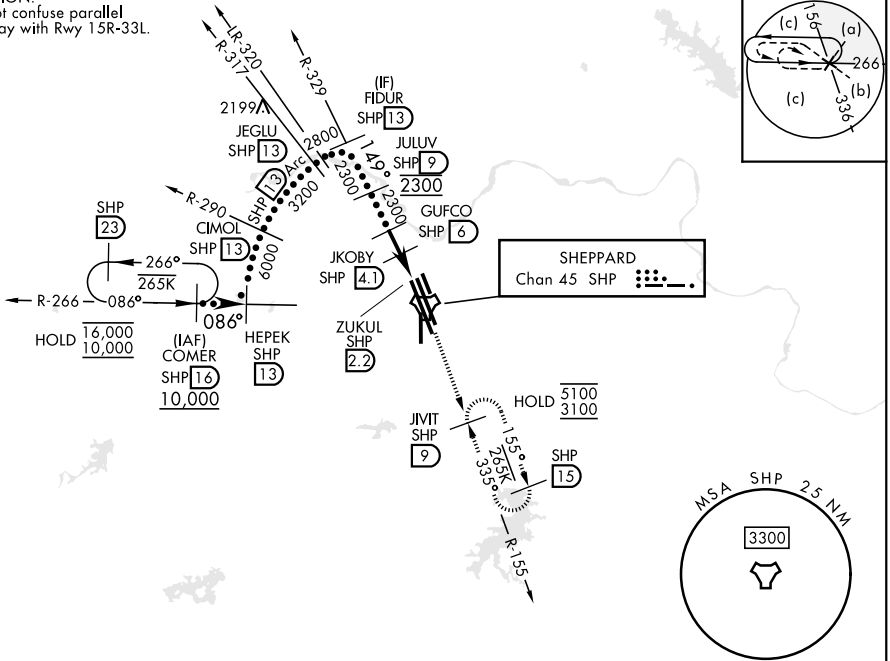


HI-TACAN RWY 15R

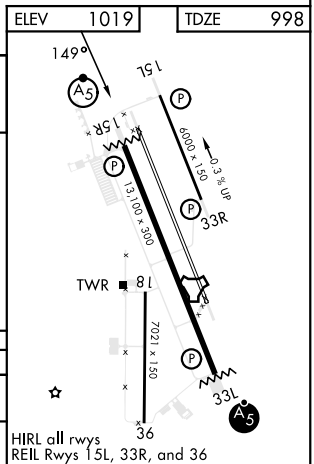
TACAN SHP Chan 45	APCH CRS 149°	Rwy Idg 13,100 TDZE 998 Arprt Elev 1019	[USAF]	SHEPPARD AFB/WICHITA FALLS MUNI (KSPS)		
* When ALS inop, increase CAT CDE vis to 1¼ miles. ** Circling not authorized W of Rwy 15R-33L.			MALSR 	MISSED APPROACH: Climb and maintain 3100, intercept SHP TACAN R-155 to SHP R-155/9 DME (JIVIT) and hold.		
ATIS★ 132.05 269.9	APP CON 118.2 269.025	TOWER★ 119.75 0 279.525 (CTAF)	GND CON 125.5 289.4	CLNC DEL 121.2 282.225	ASR	

CAUTION:
Do not confuse parallel
taxiway with Rwy 15R-33L.



EMERG SAFE ALT 100 NM 4600

VGSI and descent angle not coincident.			3100 SHP R-155	JIVIT SHP 9
CATEGORY	C	D	E	
S-15R*	1420-¾ 422 (500-¾)			
CIRCLING**	1480-1½ 461 (500-1½)	2100-3	1081	(1100-3)



HI-TACAN RWY 15R