

WICHITA FALLS, TEXAS

HI-ILS or LOC/DME Z RWY 33L

|                                  |                         |   |
|----------------------------------|-------------------------|---|
| LOC I-SPS<br><b><u>109.7</u></b> | APCH CRS<br><b>333°</b> | Rwy Idg 33L <b>13,100</b> 33C <b>10,003</b><br>TDZE 33L <b>1000</b> 33C <b>989</b><br>Arpt Elev <b>1019</b> |
|----------------------------------|-------------------------|---|

[USAF]

SHEPPARD AFB/WICHITA FALLS MUNI (KSPS)

DME required

- T** \* When ALS inop, increase CAT CDE vis to  $\frac{3}{4}$  mile.  
 \*\* When ALS inop, increase CAT CDE vis to 1 mile.  
 \*\*\* Circling not authorized W of Rwy 15R-33L.

Rwy 33



Rwy 33C

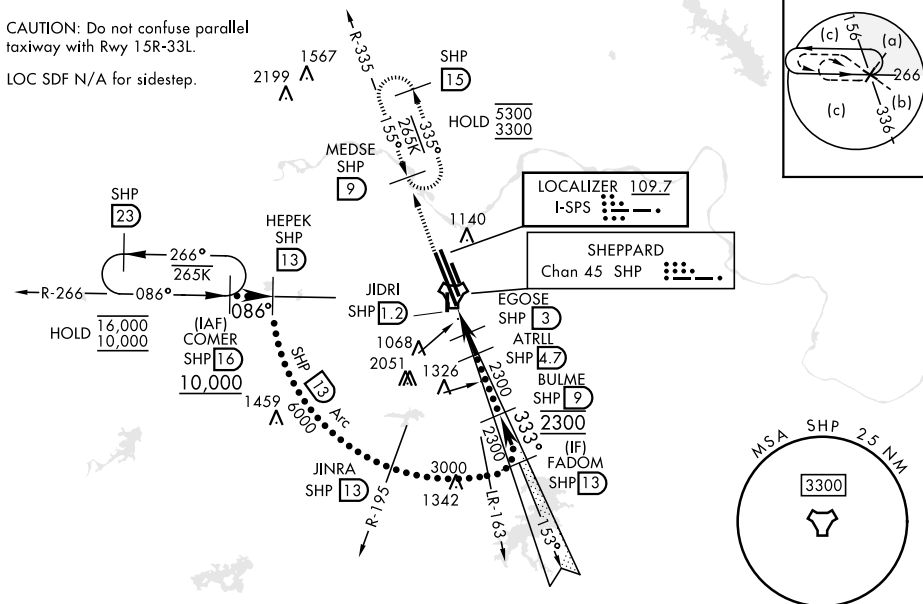


MISSED APPROACH: Climb and maintain 3300, intercept SHP TACAN R-335 to SHP R-335/9 DME (MEDSE) and hold.

|              |               |                        |             |               |     |
|--------------|---------------|------------------------|-------------|---------------|-----|
| ATIS ★       | APP CON       | TOWER ★                | GND CON     | CLNC DEL      | ASR |
| 132.05 269.9 | 118.2 269.025 | 119.750 279.525 (CTAF) | 125.5 289.4 | 121.2 282.225 |     |

CAUTION: Do not confuse parallel taxiway with Rwy 15R-33L.

LOC SDF N/A for sidestep.



SC-2, 07 AUG 2025 to 04 SEP 2025

EMERG SAFE ALT 100 NM 4600

3300 Intcp SHP R-335

MEDSE SHP 9

VGSI and ILS glidepath not coincident (VGSI Angle 3.00/TCH 56).

3300 Intcp FADZR SHP 13

JIDRI SHP 1.2

EGOSE SHP 3

ATRLL SHP 4.7

BULME SHP 9

333°

3000

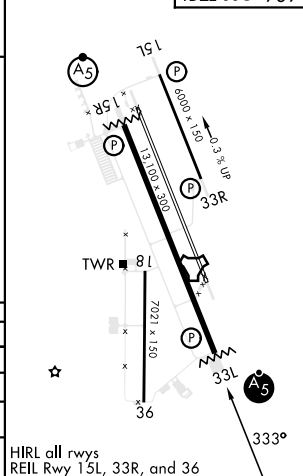
3300

GS 3.00° TCH 48'

0.4 1.8 NM 1.8 NM

| CATEGORY     | C                       | D      | E             |
|--------------|-------------------------|--------|---------------|
| S-ILS 33L *  | 1200-½                  | 200    | (200-½)       |
| S-LOC 33L ** | 1340-½                  | 340    | (400-½)       |
| SIDESTEP 33C | 1440-7/8                | 451    | (500-7/8)     |
| CIRCLING *** | 1480-1½<br>461 (500-1½) | 2100-3 | 1081 (1100-3) |

|      |      |               |
|------|------|---------------|
| ELEV | 1019 | TDZE 33L 1000 |
|      |      | TDZE 33C 989  |



WICHITA FALLS, TEXAS

33°59'N-98°30'W

SHEPPARD AFB/WICHITA FALLS MUNI (KSPS)

Amdt 8 23JAN25

HI-ILS or LOC/DME Z RWY 33L