

WICHITA, KANSAS

TACAN RWY 1R

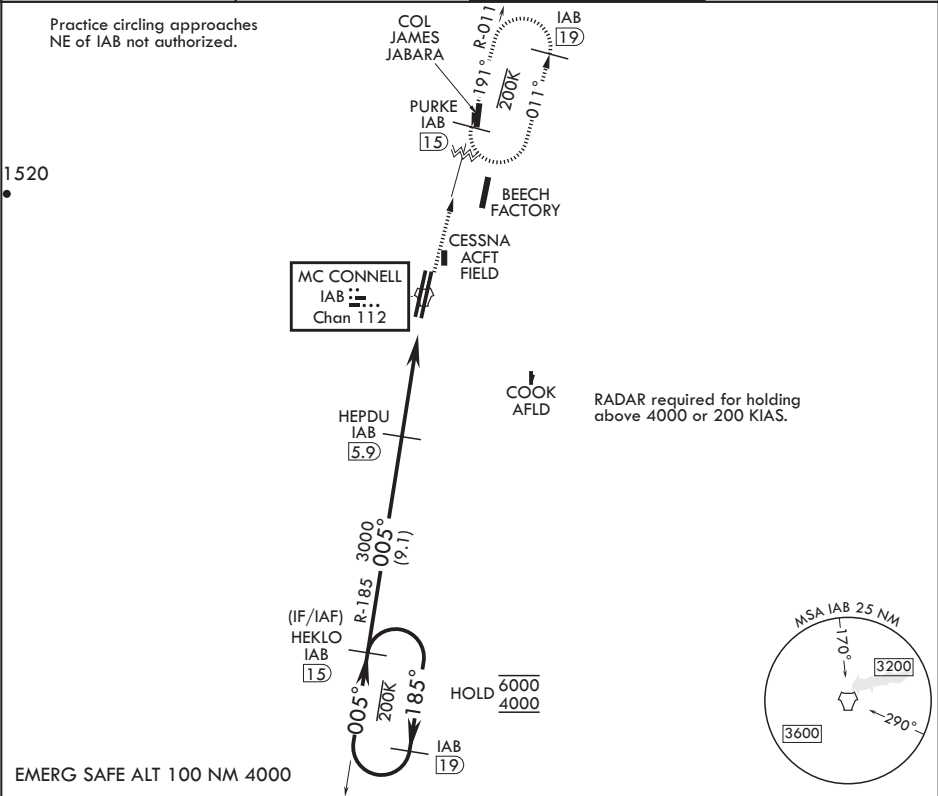
TACAN IAB Chan 112	APCH CRS 005°	Rwy Idg TDZE Arpt Elev	12,007 1347 1372
-----------------------	------------------	------------------------------	------------------------

- (USAF)

MC CONNELL AFB (KIAB)

<p>▼ *When ALS inop, increase CAT AB RVR to 55 and vis to 1 mile, CAT CDE vis to 1 1/4 miles. **Circling not authorized W of Rwy 1L-19R.</p>	<p>SSALR A3</p>	<p>MISSED APPROACH: Climb to 4000 via IAB TACAN R-011 to 15 DME (PURKE) and hold as published. Expect further clearance from ATC.</p>
--	---------------------	---

D-ATIS 124.65 269.9	WICHITA APP CON 134.8 269.1	TOWER 127.25 291.775	GND CON 118.0 275.8
------------------------	--------------------------------	-------------------------	------------------------



EMERG SAFE ALT 100 NM 4000		HEPDU IAB 5.9		3000 005° (9.1)		R-185 (IF/IAF) HEKLO IAB 15		HOLD 6000 4000		IAB 19		ELEV 1372		TDZE 1347	
6000 4000		185°		005°		005°		3000 3.03% TCH 60		4.3 NM		0.7		TACAN	
WGS and descent angles not coincident (VGS Angle 3.00/TCH 64)		HEKLO IAB 15		HEPDU IAB 5.9		WVIL IAB 1.6		TACAN		PURKE IAB 15		4000 IAB R-011		ELEV 1372	
CATEGORY	A	B	C	D	E										
S-1R*	1780/40		433		(500-¾)										
CIRCLING**	1900-1 528 (600-1)		1940-1½ 568 (600-1½)		1940-2 568 (600-2)		2400-3 1028 (1100-3)								

WICHITA, KANSAS

37°37'N - 97°16'W

MC CONNELL AFB (KIAB)

Amdt 7 28DEC23

TACAN RWY 1R

NC-2, 07 AUG 2025 to 04 SEP 2025

NC-2, 07 AUG 2025 to 04 SEP 2025