

WICHITA, KANSAS

TACAN RWY 1L

TACAN IAB Chan 112	APCH CRS 011°	Rwy Idg TDZE Arpt Elev	12,000 1347 1372
-----------------------	------------------	------------------------------	------------------------

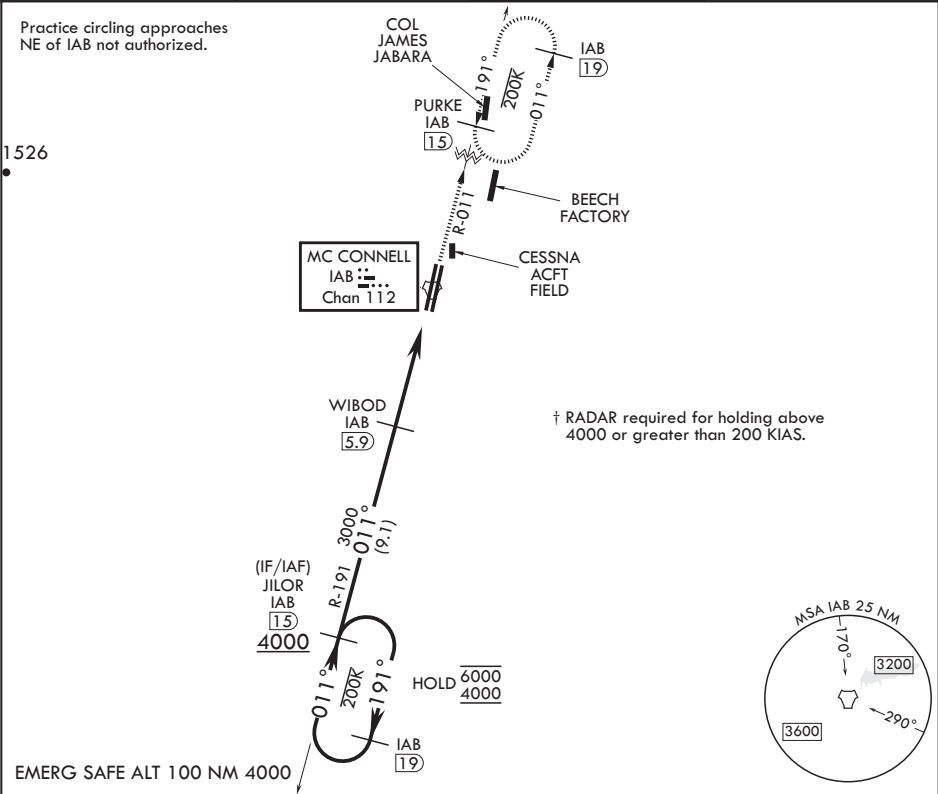
- (USAF)

MC CONNELL AFB (KIAB)

▼ *When ALS inop, increase CAT AB RVR to 55 and vis to 1 mile, CAT CDE vis to 1 1/4 miles. **Circling not authorized W of Rwy 1L-19R.	ALSF-1 A1	MISSED APPROACH: Climb to 4000 via IAB TACAN R-011 to 15 DME (PURKE) and hold as published. Expect further clearance from ATC.
--	--------------	--

D-ATIS 124.65 269.9	WICHITA APP CON 134.8 269.1	TOWER 127.25 291.775	GND CON 118.0 275.8
------------------------	--------------------------------	-------------------------	------------------------

Practice circling approaches NE of IAB not authorized.



EMERG SAFE ALT 100 NM 4000		4000 IAB R-011		PURKE IAB 15	ELEV 1372	TDZE 1347
		4.3 NM		0.7 NM		
CATEGORY	A	B	C	D	E	
S-1L*	1780/24 433 (500-½)		1780/40 433 (500-¾)			
■ CIRCLING**	1900-1 528 (600-1)		1940-1½ 568 (600-1½)	1940-2 568 (600-2)	2400-3 1028 (1100-3)	

WICHITA, KANSAS

37°37'N - 97°16'W

MC CONNELL AFB (KIAB)

Amdt 6 28DEC23

TACAN RWY 1L

NC-2, 07 AUG 2025 to 04 SEP 2025

NC-2, 07 AUG 2025 to 04 SEP 2025