

TACAN RWY 19L

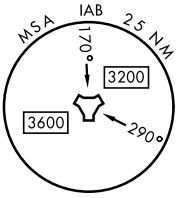
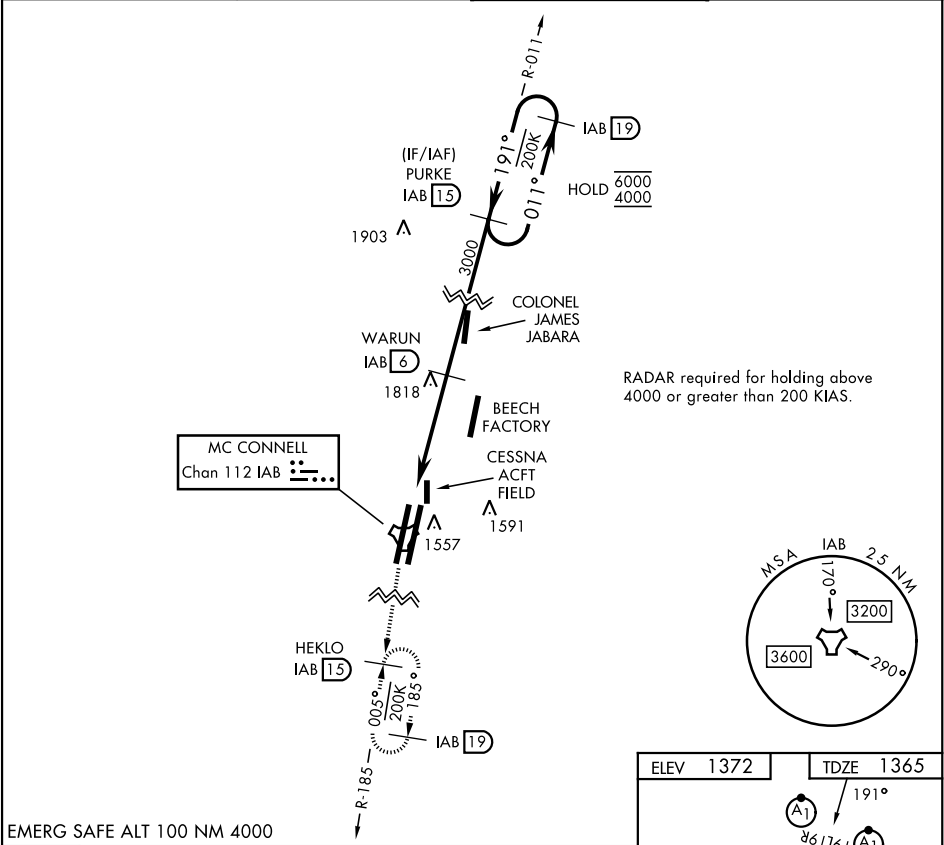
TACAN IAB Chan 112	APCH CRS 191°	Rwy Idg 12,007 TDZE 1365 Arpt Elev 1372
-----------------------	------------------	---

[USAF]

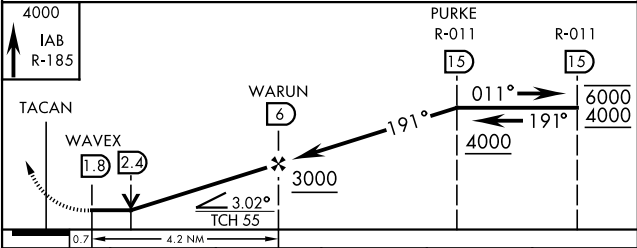
MC CONNELL AFB (KIAB)

▼ * When ALS inop, increase CAT AB RVR to 55 and vis to 1 mile, CAT CDE vis to 1½ miles. ** Circling not authorized W of Rwy 1L-19R.	ALSF-1 A1	MISSED APPROACH: Climb to 4000 via IAB TACAN R-185 to 15 DME (HEKLO) and hold as published. Expect further clearance from ATC.
---	--------------	--

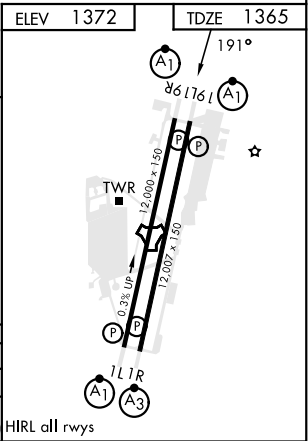
D-ATIS 124.65 269.9	WICHITA APP CON 134.8 269.1	TOWER 127.25 291.775	GND CON 118.0 275.8
------------------------	--------------------------------	-------------------------	------------------------



EMERG SAFE ALT 100 NM 4000



CATEGORY	A	B	C	D	E
S-19L *	1840/40	475 (500-¾)	1840/50	475 (500-1)	
** CIRCLING	1900-1	528 (600-1)	1940-1½ 568 (600-1½)	1940-2 568 (600-2)	2400-3 1028 (1100-3)



TACAN RWY 19L