

WICHITA, KANSAS

RNAV (GPS) Y RWY 1L

WAAS CH 71272 W01A	APCH CRS 008°	Rwy ldg TDZE Arpt Elev	12,000 1347 1372
--------------------------	------------------	------------------------------	------------------------

- (USAF)

MC CONNELL AFB (KIAB)

RNP APCH-GPS

▼ * When ALS inop, increase RVR to 40, vis to 3/4 mile.
** When ALS inop, increase RVR to 60, vis to 1 1/8 miles.

ALSF-1



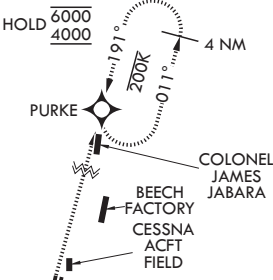
MISSED APPROACH: Climb to 2000 then climbing to 4000, direct PURKE and hold. Expect further clearance from ATC.

D-ATIS 124.65 269.9	WICHITA APP CON 134.8 269.1	TOWER 127.25 291.775	GND CON 118.0 275.8
------------------------	--------------------------------	-------------------------	------------------------

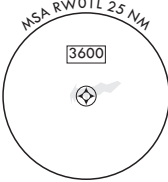
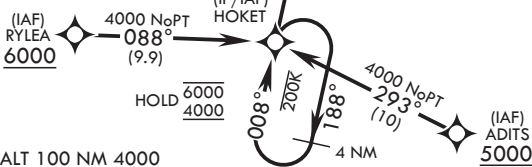
*** When ALS inop, increase CAT AB RVR to 55, vis to 1 mile; CAT CDE RVR to 60, vis to 1 1/8 miles.
**** Circling not authorized west of Rwy 1L-19R.

For uncompensated Baro-VNAV systems, procedure not authorized below -17°C (2°F) or above 49°C (121°F).

When circling to Rwy 19L at night, operational VGSI required, remain on or above VGSI glidepath until threshold.

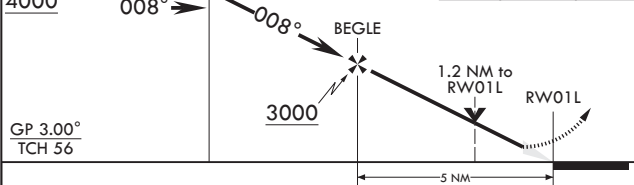


RADAR required for holding abv 5000 or abv 230 KIAS

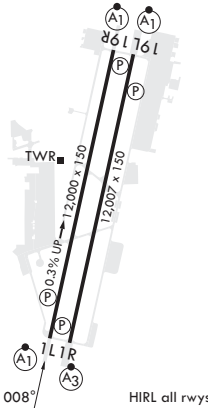


EMERG SAFE ALT 100 NM 4000

4 NM Holding Pattern	HOKET	2000	4000	PURKE	ELEV 1372	TDZE 1347
6000	188°	008°	008°	008°		
4000						



CATEGORY	A	B	C	D	E
LPV DA*	1547/24	200	(200-1/2)		
LNAV/VNAV DA**	1742/35	395	(400-5/8)		
LNAV MDA***	1760/24 413 (400-1/2)	1760/40 413 (400-3/4)			
Ⓢ CIRCLING****	1900-1 528 (600-1)	1900-1 1/2 528 (600-1 1/2)	1940-2 568 (600-2)	2400-3 1028 (1100-3)	



WICHITA, KANSAS

37°37'N - 97°16'W

MC CONNELL AFB (KIAB)

Amdt 6 12JUN25

RNAV (GPS) Y RWY 1L