

WICHITA, KANSAS

RNAV (GPS) Y RWY 19R

WAAS CH 71277 W19A	APCH CRS 188°	Rwy ldg TDZE Arpt Elev	12,000 1372 1372
--------------------------	------------------	------------------------------	------------------------

- (USAF)

MC CONNELL AFB (KIAB)

RNP APCH-GPS

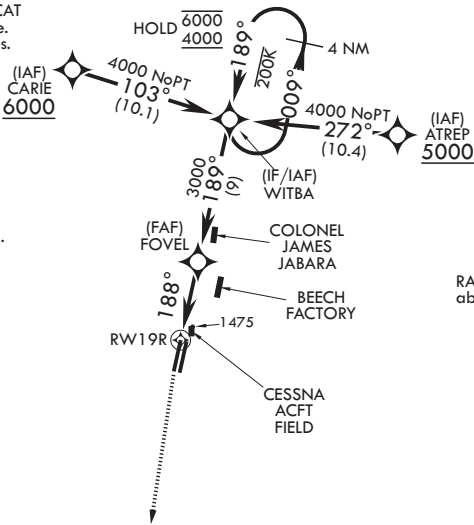
- ▼ * When ALS inop, increase RVR to 40, vis to 3/4 mile.
** When ALS inop increase RVR to 55, vis to 1 mile.



MISSED APPROACH: Climb to 2000 then climbing to 4000 direct HEKLO and hold. Expect further clearance from ATC.

D-ATIS 124.65 269.9	WICHITA APP CON 134.8 269.1	TOWER 127.25 291.775	GND CON 118.0 275.8
------------------------	--------------------------------	-------------------------	------------------------

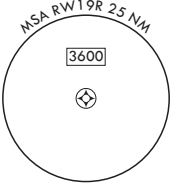
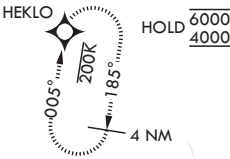
- *** When ALS inop increase CAT
AB RVR to 55, vis to 1 mile.
CAT CDE vis to 1 3/8 miles.
**** Circling NA west
of Rwy 1L-19R.



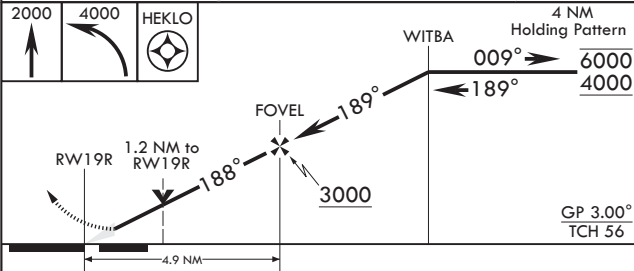
When circling to Rwy 19L at night, operational VGSIs required, remain on or above VGSIs glidepath until threshold.

For uncompensated Baro-VNAV systems, Procedure NA below -17°C (2°F) or above 50°C (123°F).

RADAR required for holding abv 5000 or abv 230 KIAS

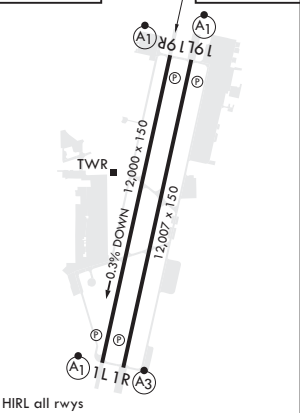


EMERG SAFE ALT 100 NM 4000



ELEV 1372	TDZE 1372
-----------	-----------

CATEGORY	A	B	C	D	E
LPV DA*	1572/24	200	(200-1/2)		
LNAV/VNAV DA**	1748/35	376	(400-5/8)		
LNAV MDA***	1820/24 448 (500-1/2)	1820/45 448 (500-3/4)			
☐ CIRCLING****	1900-1 528 (600-1)	1900-1 1/2 528 (600-1 1/2)	1940-2 568 (600-2)	2400-3 1028 (1100-3)	



WICHITA, KANSAS

37°37'N - 97°16'W

MC CONNELL AFB (KIAB)

Amdt 7 12JUN25

RNAV (GPS) Y RWY 19R