

WICHITA, KANSAS

RNAV (RNP) Z RWY 19R

APCH CRS	Rwy Idg	12,000
188°	TDZE	1372
	Arpt Elev	1372

(USAF)

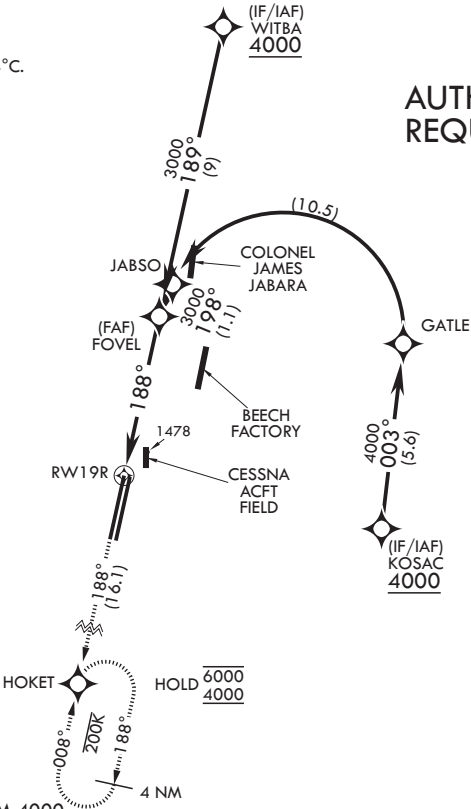
MC CONNELL AFB (KIAB)

RNP AR APCH-GPS	ALSIF-1	MISSED APPROACH: Climb to 4000 direct HOKET and hold as published. Expect further clearance from ATC.
▼ * When ALS inop, increase vis to 1 1/4 miles. ** When ALS inop, increase vis to 1 3/8 miles.		

D-ATIS 124.65 269.9	WICHITA APP CON 134.8 269.1	TOWER 127.25 291.775	GND CON 118.0 275.8
------------------------	--------------------------------	-------------------------	------------------------

For uncompensated Baro-VNAV systems, procedure not authorized below -17°C. or above 54°C.

AUTHORIZATION REQUIRED



RADAR required for holding above 5000 or above 230 KIAS



EMERG SAFE ALT 100 NM 4000

<div>4000</div> <div>↑tr 188°</div> <div></div>	See planview for multiple IF locations				<div>FOVEL</div> <div>3000</div> <div></div> <div>3000</div> <div>GP 3.00°</div> <div>TCH 56</div>	<div>ELEV 1372</div>	<div>TDZE 1372</div>
CATEGORY	A	B	C	D			
RNP 0.10 DA*	1798/40	426	(500-¾)				
RNP 0.30 DA**	1844/50	472	(500-1)				

HIRL all rwys

WICHITA, KANSAS

37°37'N - 97°16'W

MC CONNELL AFB (KIAB)

Amdt 1 12JUN25

RNAV (RNP) Z RWY 19R

NC-2, 07 AUG 2025 to 04 SEP 2025

NC-2, 07 AUG 2025 to 04 SEP 2025