

WICHITA, KANSAS

RNAV (GPS) RWY 1R

APCH CRS 005°	Rwy Idg 12,007 TDZE 1347 Arpt Elev 1372
------------------	---

- (USAF)

MC CONNELL AFB (KIAB)

RNP APCH-GPS

T * When ALS inop, increase CAT AB RVR to 55, vis to 1 mile; CAT CDE vis to 1 1/4 miles.
** Circling not authorized west of Rwy 1L-19R.

SSALR

MISSED APPROACH: Climb to 2000 then climbing to 4000, direct PURKE and hold. Expect further clearance from ATC.

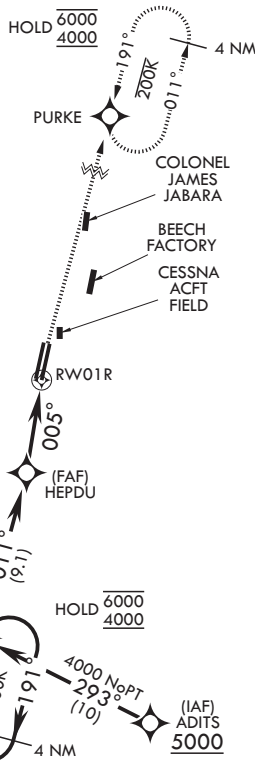
D-ATIS
124.65 269.9

WICHITA APP CON
134.8 269.1

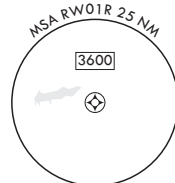
TOWER
127.25 291.775

GND CON	
118.0	275.8

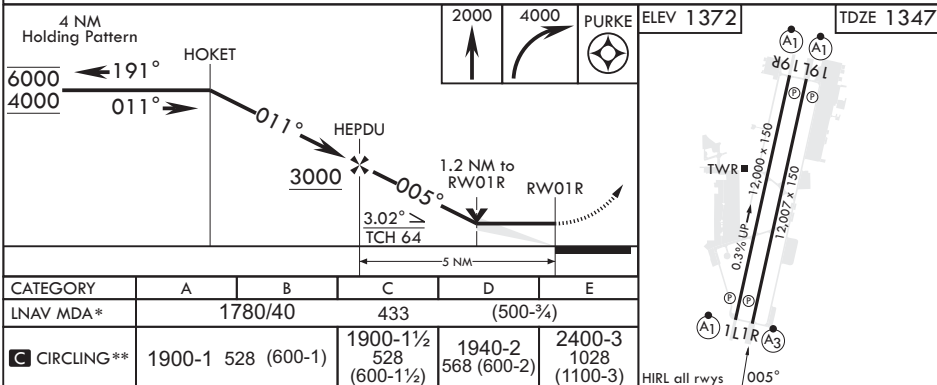
When circling to Rwy 19L at night, operational VGSi required, remain on or above VGSi glidepath until threshold.



RADAR required for holding
abv 5000 or abv 230 KIAS.



EMERG SAFE ALT 100 NM 4000



WICHITA, KANSAS

37°37'N - 97°16'W

MC CONNELL AFB (KIAB)

RNAV (GPS) RWY 1R

Amdt 7 12JUN25