

WICHITA, KANSAS

RNAV (GPS) RWY 19L

APCH CRS	Rwy Idg	12,007
191°	TDZE	1365
	Arprt Elev	1372

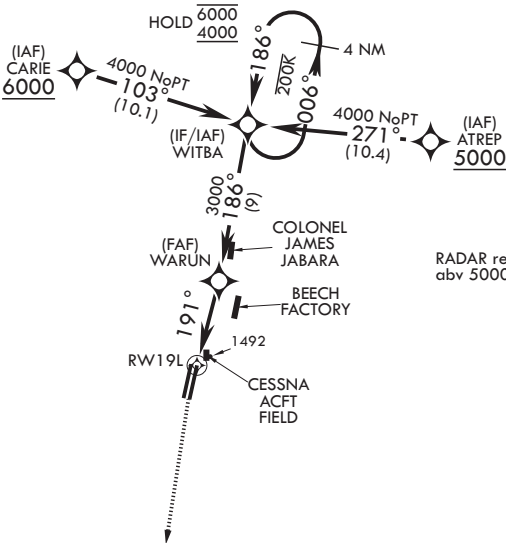
- (USAF)

MC CONNELL AFB (KIAB)

RNP APCH-GPS	ALSF-1	MISSED APPROACH: Climb to 2000 then climbing to 4000 direct HEKLO and hold. Expect further clearance from ATC.
* When ALS inop, increase CAT AB RVR to 55, vis to 1 mile; CAT CDE RVR to 60, vis to 1 1/8 miles. ** Circling not authorized W of Rwy 1L-19R.		

D-ATIS 124.65 269.9	WICHITA APP CON 134.8 269.1	TOWER 127.25 291.775	GND CON 118.0 275.8
------------------------	--------------------------------	-------------------------	------------------------

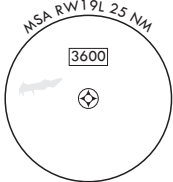
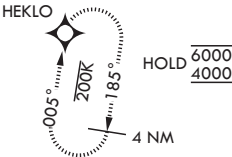
Terrain 1368 ft MSL  
200 ft from threshold,  
200 ft right of course.  
  
Rwy 19L helicopter  
visibility reduction below  
RVR 50 not authorized.








USAF ONLY: When VGSI  
Inop, Straight-In Rwy 19L  
authorized at night with  
aircrew command approval.

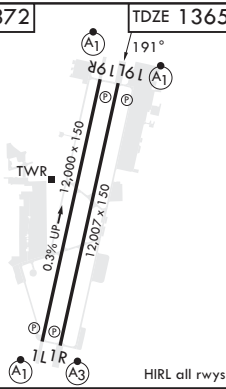
Straight-in Rwy 19L at night,  
operational VGSI required,  
remain on or above VGSI  
glidepath until threshold.

RADAR required for holding  
abv 5000 or abv 230 KIAS



EMERG SAFE ALT 100 NM 4000

<div>2000</div> <div>↑</div>		<div>4000</div> <div></div>	<div>HEKLO</div> <div></div>	<div>WITBA</div> <div>4 NM Holding Pattern</div> <div>006° </div> <div>186° </div> <div>6000</div> <div>4000</div>					<div>ELEV 1372</div>	<div>TDZE 1365</div>
<div></div> <div>RW19L</div>		<div>191°</div> <div>WARUN</div> <div>3000</div> <div>186°</div> <div>≤ 3.02°</div> <div>TCH 55</div>						<div>191°</div> <div>661761</div> <div>A1</div> <div>A1</div>		
<div>4.9 NM</div>							<div>TWR</div> <div>0.3% UP</div> <div>12,000' x 150</div> <div>12,000' x 150</div> <div>A1</div> <div>A3</div> <div>111R</div>			
CATEGORY	A	B	C	D	E					
LNAV MDA*	1760/50		395	(400-1)						
<div>C</div> CIRCLING**	1900-1 528 (600-1)	1900-1½ 528 (600-1½)	1940-2 568 (600-2)	2400-3 1028 (1100-3)						
						HIRL all runways				



WICHITA, KANSAS

37°37'N - 97°16'W

MC CONNELL AFB (KIAB)

Amdt 8 12JUN25

RNAV (GPS) RWY 19L

NC-2, 07 AUG 2025 to 04 SEP 2025

NC-2, 07 AUG 2025 to 04 SEP 2025