

TACAN Y RWY 7

TACAN NUW Chan 85	APCH CRS 058°	Rwy Idg 8000 TDZE 25 Arpt Elev 47
-----------------------------	-------------------------	--

[USN]

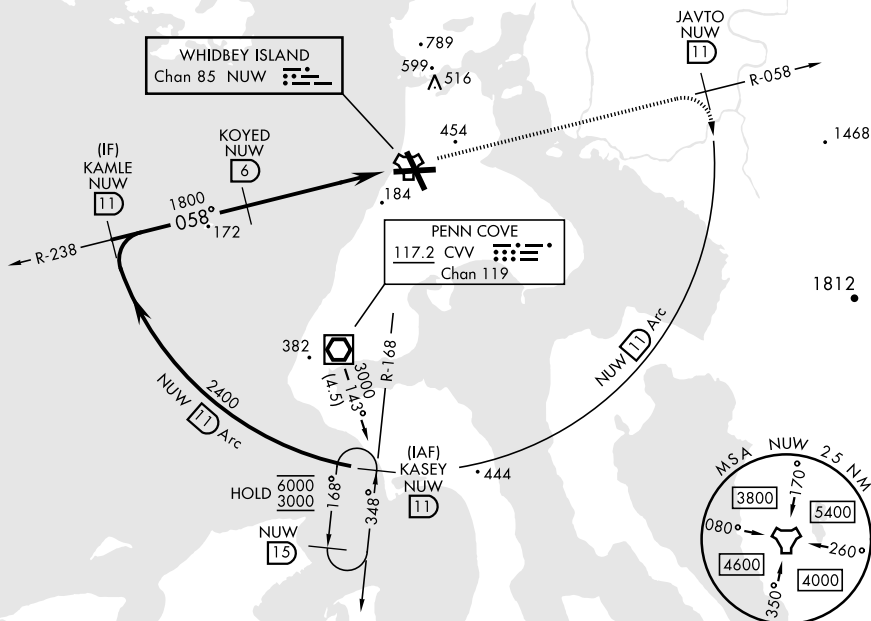
WHIDBEY ISLAND NAS (AULT FLD) (KNUW)



MISSED APPROACH: Climb to 3000 via NUW TACAN R-058 to JAVTO, then arc SE of NUW via 11 DME Arc to KASEY and hold.

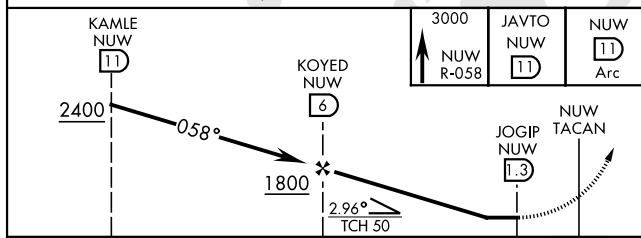
ATIS	WHIDBEY APP CON	WHIDBEY TOWER	GND CON	CLNC DEL	ASR/PAR
134.15 281.5	120.7 270.8 (E) 118.2 285.65 (W)	127.9 340.2	121.75 336.4	135.1 379.9	


CAUTION: CAT CDE intmed seg length 5 NM

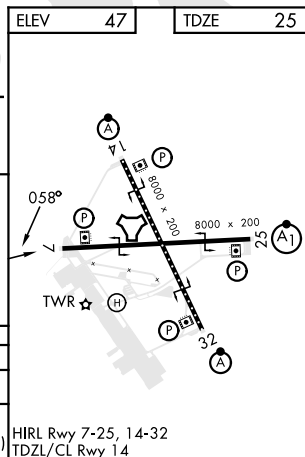


NW-1, 07 AUG 2025 to 04 SEP 2025

EMERG SAFE ALT 100 NM 15,500



			4.7 NM		
CATEGORY	A	B	C	D	E
S-7	440/55	415 (400-1)	440/60	415 (400-1½)	
 CIRCLING	760-1	713 (800-1)	860-2½ 813 (900-2½)	900-2¾ 853 (900-2¾)	1200-3 1153 (1200-3)



OAK HARBOR, WASHINGTON

48°21'N-122°39'W

WHIDBEY ISLAND NAS (AULT FLD) (KNUW)

Amdt 4 31OCT24

TACAN Y RWY 7