

TACAN Y RWY 32

TACAN NUW Chan <b>85</b>	APCH CRS <b>311°</b>	Rwy Idg <b>8000</b> TDZE <b>47</b> Arpt Elev <b>47</b>
-----------------------------	-------------------------	--

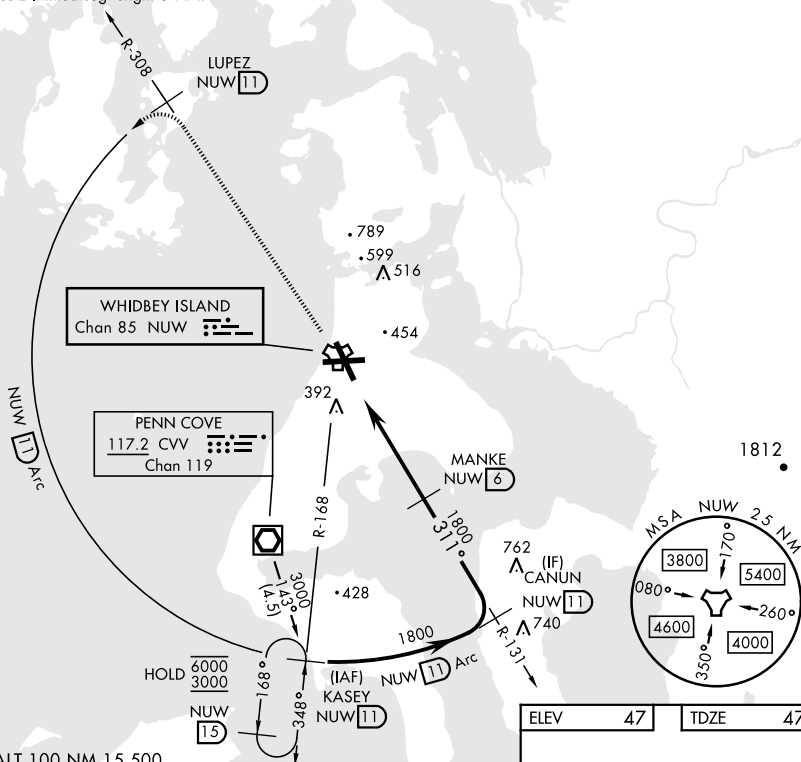
[USN]

WHIDBEY ISLAND NAS (AULT FLD) (KNUW)




<p><b>V</b> * When ALS inop, increase CAT AB RVR to 55, vis to 1 mile; CAT CDE to 1¾ miles.</p>	<p>ALSF-2</p>	<p><b>MISSED APPROACH:</b> Climb to 3000 via NUW TACAN R-308 to LUPEZ, then Arc SW of NUW via 11 DME Arc to KASEY and hold.</p>
---	---	---

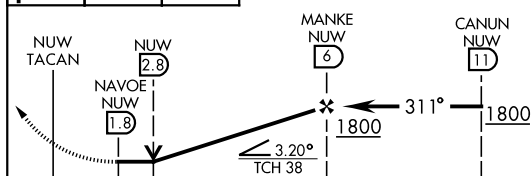
ATIS 134.15 281.5	WHIDBEY APP CON 120.7 270.8 (E) 118.2 285.65 (W)	WHIDBEY TOWER 127.9 340.2	GND CON 121.75 336.4	CLNC DEL 135.1 379.9	ASR/PAR
----------------------	--	------------------------------	-------------------------	-------------------------	---------


CAUTION: CAT CDE intmed seg length 5 NM.

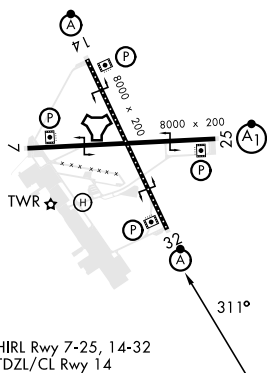


EMERG SAFE ALT 100 NM 15,500

 3000 NUW R-308	LUPEZ NUW 	NUW  Arc
--	---	--



					
CATEGORY	A	B	C	D	E
S-32 *	680/30	633 (700-%)	680-1% 633 (700-1%)		
<b>C</b> CIRCLING	760-1	713 (800-1)	860-2½ 813 (900-2½)	900-2¾ 853 (900-2¾)	1200-3 1153 (1200-3)



OAK HARBOR, WASHINGTON

48° 21' N-122° 39' W

WHIDBEY ISLAND NAS (AULT FLD) (KNUW)

Amdt 4 31OCT24

TACAN Y RWY 32

NW-1, 07 AUG 2025 to 04 SEP 2025

NW-1, 07 AUG 2025 to 04 SEP 2025