

OAK HARBOR, WASHINGTON

TACAN Y RWY 25

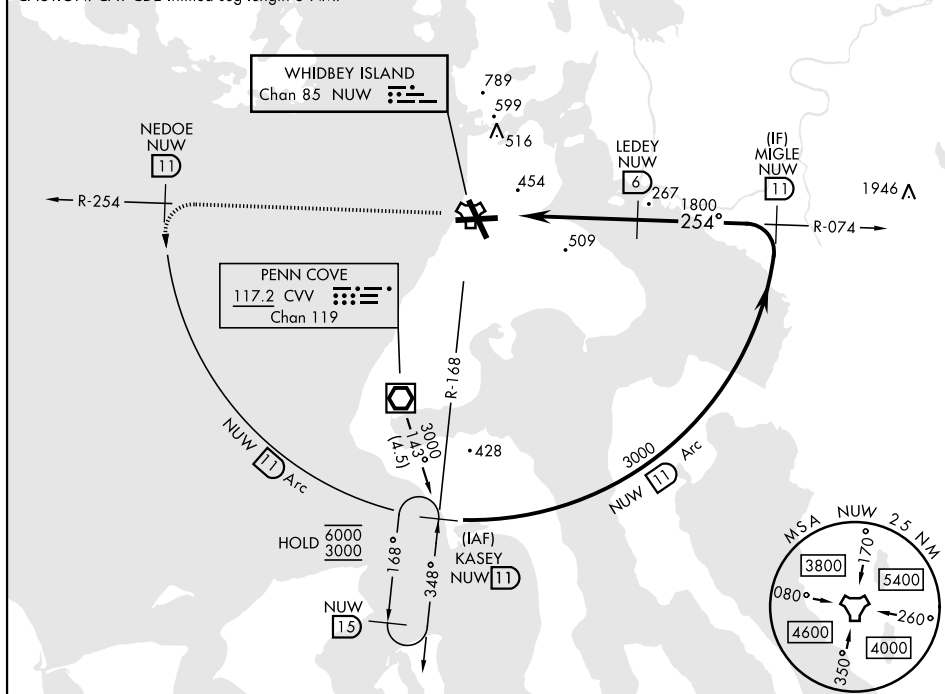
TACAN NUW Chan 85	APCH CRS 254°	Rwy Idg 8000 TDZE 28 Arpt Elev 47
-----------------------------	-------------------------	--

[USN]

WHIDBEY ISLAND NAS (AULT FLD) (KNUW)

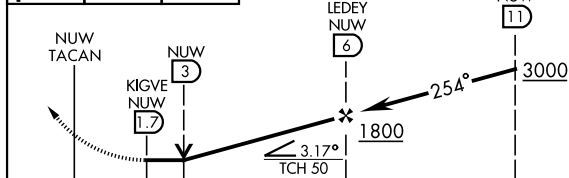
▼	* When ALS inop, increase CAT AB RVR to 55, vis to 1 mile; CAT CDE vis to 2 miles.		ALSF-1 	MISSED APPROACH: Climb to 3000 via NUW TACAN R-254 to NEDOE, then arc SW of NUW via 11 DME Arc to KASEY and hold.		
	ATIS 134.15 281.5	WHIDBEY APP CON 120.7 270.8 (E) 118.2 285.65 (W)	WHIDBEY TOWER 127.9 340.2	GND CON 121.75 336.4	CLNC DEL 135.1 379.9	ASR/PAR

CAUTION: CAT CDE intmed seg length 5 NM.

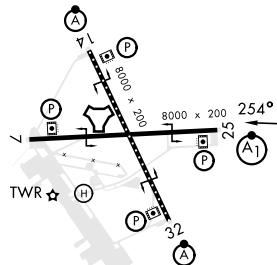


EMERG SAFE ALT 100 NM 15,500

3000 ↑ NUW R-254	NEDOE NUW 11	NUW 11 Arc
---------------------------	--------------------	------------------



		0.8		4.3 NM			
CATEGORY	A	B	C	D	E		
S-25 *	760/30	732 (800-%)	760-1%		732 (800-1%)		
C CIRCLING	760-1	713 (800-1)	860-2½ 813 (900-2½)	900-2½ 853 (900-2½)	1200-3 1153 (1200-3)		



HIRL Rwy 7-25, 14-32
TDZL/CL Rwy 14

OAK HARBOR, WASHINGTON

48° 21' N-122° 39' W

WHIDBEY ISLAND NAS (AULT FLD) (KNUW)

Amdt 4 31OCT24

TACAN Y RWY 25

NW-1, 07 AUG 2025 to 04 SEP 2025

NW-1, 07 AUG 2025 to 04 SEP 2025