

TACAN Y RWY 14

TACAN NUW	APCH CRS	Rwy Idg
Chan 85	141°	TDZE 39
		Arpt Elev 47

[USN]

WHIDBEY ISLAND NAS (AULT FLD) (KNUW)

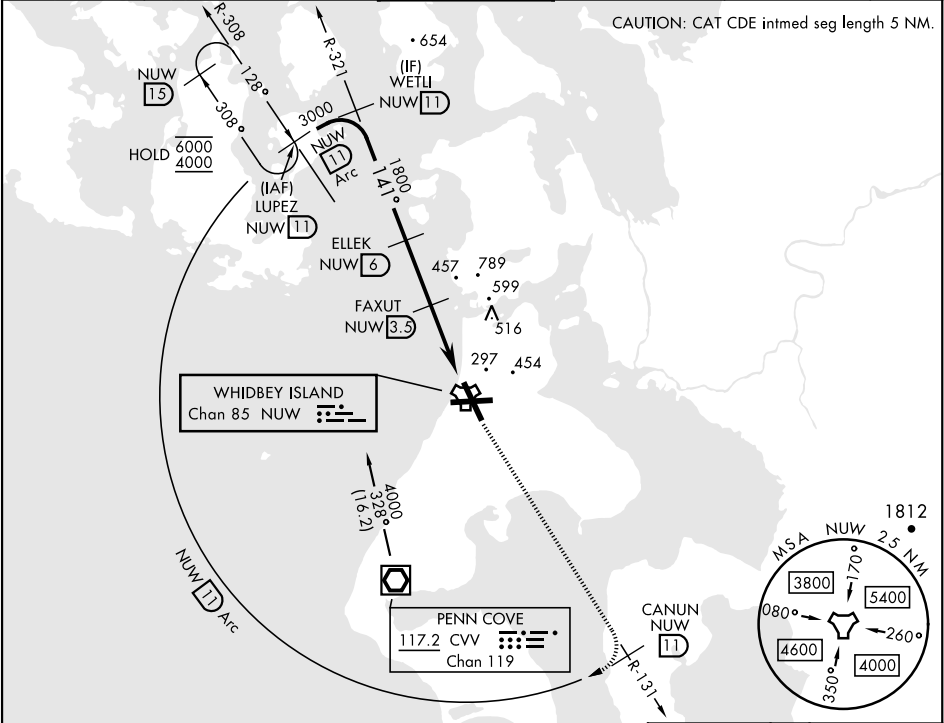
✴ When ALS inop, increase CAT AB RVR to 55, vis to 1 mile, CAT CDE vis to 1½ miles.

ALS-F-2

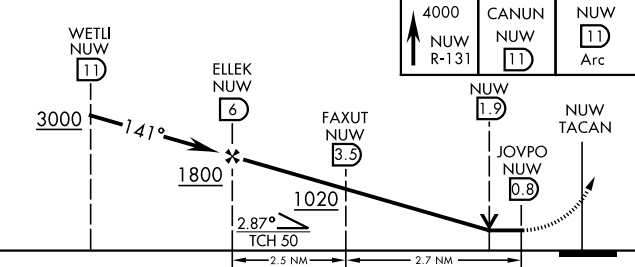
MISSED APPROACH: Climb to 4000 via NUW TACAN R-131 to CANUN, then arc SW of NUW via 11 DME Arc to LUPEZ and hold.

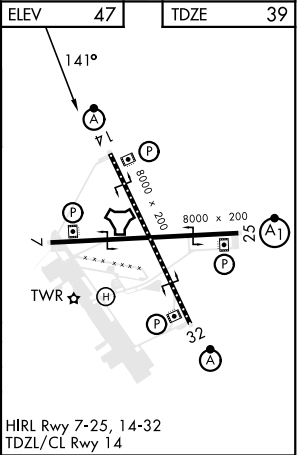
ATIS	WHIDBEY APP CON	WHIDBEY TOWER	GND CON	CLNC DEL	ASR/PAR
134.15 281.5	120.7 270.8 (E) 118.2 285.65 (W)	127.9 340.2	121.75 336.4	135.1 379.9	

CAUTION: CAT CDE intmd seg length 5 NM.



EMERG SAFE ALT 100 NM 15,500

		4000 NUW R-131	CANUN NUW 1.1	NUW 1.1 Arc	
CATEGORY	A	B	C	D	E
S-14 *	560/24	521 (600-½)	560/55		521 (600-1)
CIRCLING	760-1	713 (800-1)	860-2½ 813 (900-2½)	900-2¾ 853 (900-2¾)	1200-3 1153 (1200-3)



TACAN Y RWY 14

NW-1, 07 AUG 2025 to 04 SEP 2025

NW-1, 07 AUG 2025 to 04 SEP 2025