

RNAV (GPS) RWY 7

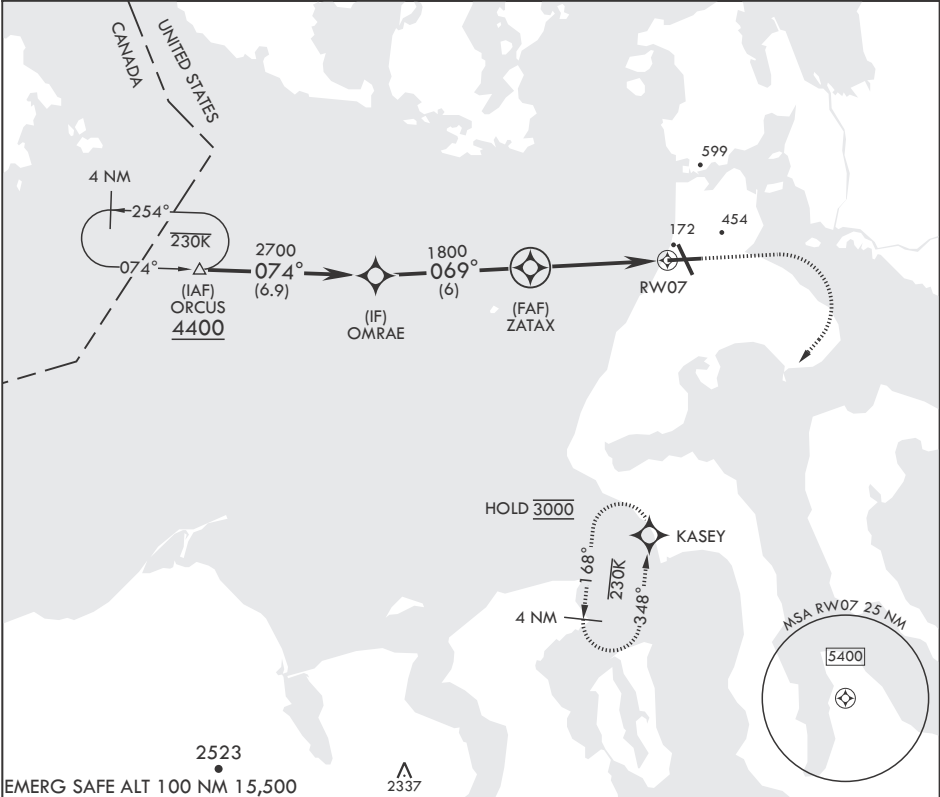
APCH CRS	Rwy Idg	8000
069°	TDZE	25
	Arprt Elev	47

- (USN)

WHIDBEY ISLAND NAS (AULT FLD) (KNUW)

RNP APCH	MISSED APPROACH: Climb to 1500, then climbing right turn to 3000 direct KASEY and hold. Do not exceed 230 KIAS until turn completion.
----------	---

ATIS 134.15 281.5	APP CON/DEP CON 118.2 285.65 (W) 120.7 270.8 (E)	TOWER 127.9 340.2	GND CON 121.75 336.4	CLNC DEL 135.1 379.9	ASR/PAR
----------------------	--	----------------------	-------------------------	-------------------------	---------



ORCUS 4400	OMRAE 2700	ZATAK 1800	1.2 NM to RW07	RW07	ELEV 47	TDZE 25
074°	069°	168°	3.05° TCH 50	5.4 NM		
1500	3000	KASEY				
CRS 069°						
CATEGORY	A	B	C	D	E	
LNAV MDA	440/55	415 (400-1)	440/60	415	(400-1½)	
CIRCLING	760-1	713 (800-1)	860-2½ 813 (900-2½)	900-2¾ 853 (900-2¾)	1200-3 1153 (1200-3)	
HIRL all Rwys TDZL/CL Rwy 14						

RNAV (GPS) RWY 7

NW-1, 07 AUG 2025 to 04 SEP 2025

NW-1, 07 AUG 2025 to 04 SEP 2025