

OAK HARBOR, WASHINGTON

WAAS CH 44487 W25A	APCH CRS 249°	Rwy ldg TDZE 28 Arpt Elev 47
--------------------------	------------------	------------------------------------

- (USN)

RNAV (GPS) RWY 25

WHIDBEY ISLAND NAS (AULT FLD) (KNUW)

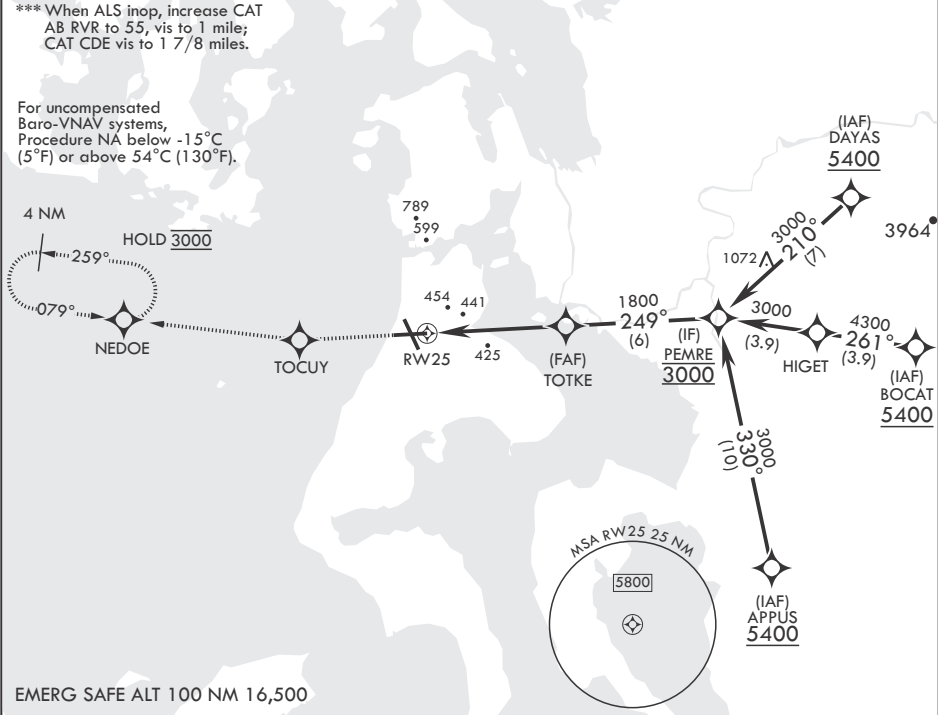
RNP APCH

▼ * When ALS inop, increase RVR to 40, vis to 3/4 mile.
** When ALS inop, increase vis to 1 7/8 miles.

ALSF-1

MISSED APPROACH: Climb to 3000 direct TOCUY and track 259° to NEDOE and hold.

ATIS 134.15 281.5	APP CON/DEP CON 118.2 285.65 (W) 120.7 270.8 (E)	TOWER 127.9 340.2	GND CON 121.75 336.4	CLNC DEL 135.1 379.9	ASR/PAR
----------------------	--	----------------------	-------------------------	-------------------------	---------



3000	TOCUY	tr 259°	NEDOE	PEMRE	ELEV 47	TDZE 28
CATEGORY	A	B	C	D	E	
LPV DA*	278/24		250	(300-½)		
LNAV/VNAV DA**	685-1⅝		657	(700-1⅝)		
LNAV MDA***	680/24 652 (700-½)		680-1⅝	652	(700-1⅝)	
CIRCLING	760-1 713 (800-1)		860-2½ 813 (900-2½)	900-2¾ 853 (900-2¾)	1200-3 1153 (1200-3)	

OAK HARBOR, WASHINGTON

48°21'N - 122°39'W

WHIDBEY ISLAND NAS (AULT FLD) (KNUW)

Amdt 3 31OCT24

RNAV (GPS) RWY 25

NW-1, 07 AUG 2025 to 04 SEP 2025

NW-1, 07 AUG 2025 to 04 SEP 2025