

OAK HARBOR, WASHINGTON

WAAS CH 50004 W14A	APCH CRS 137°	Rwy ldg TDZE Arpt Elev	8000 39 47
--------------------------	------------------	------------------------------	------------------

- (USN)

RNAV (GPS) RWY 14

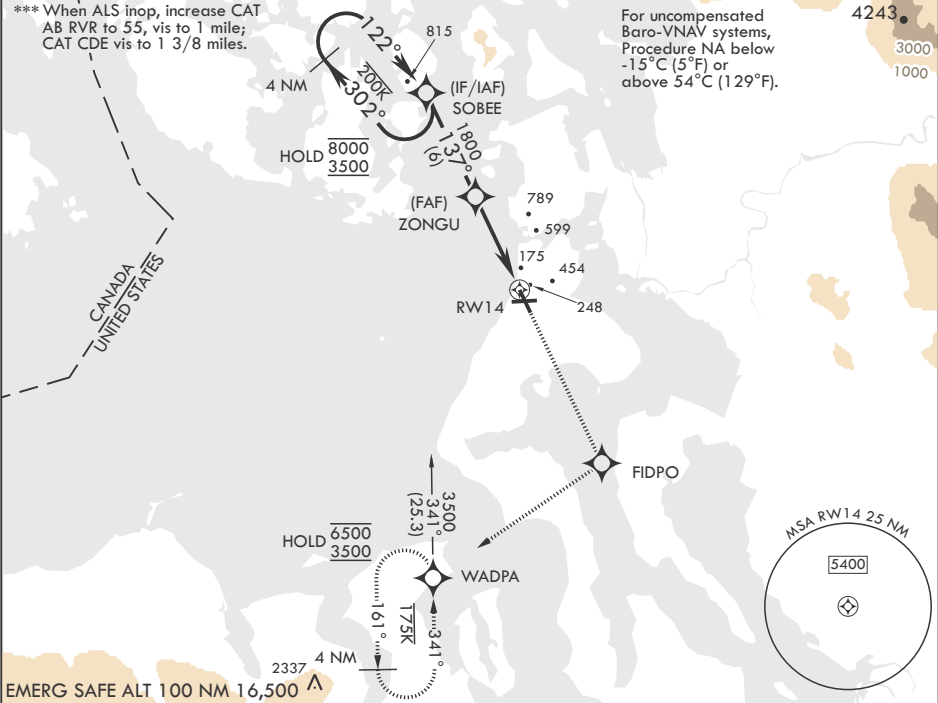
WHIDBEY ISLAND NAS (AULT FLD) (KNUW)

RNP APCH

▼ * When TDZ/CL lights inop, increase RVR to 24. When ALS inop, increase RVR to 40, vis to 3/4 mile.
** When ALS inop, increase RVR to 60, vis to 1 1/8 miles.

ALSF-2 MISSED APPROACH: Climb to 3500 direct FIDPO, and on track 218° to WADPA and hold. Do not exceed 230K.

ATIS 134.15 281.5	APP CON/DEP CON 118.2 285.65 (W) 120.7 270.8 (E)	TOWER 127.9 340.2	GND CON 121.75 336.4	CLNC DEL 135.1 379.9	ASR/PAR
----------------------	--	----------------------	-------------------------	-------------------------	---------



4 NM Holding Pattern	SOBEE	3500	FIDPO	tr 218°	WADPA	ELEV 47	TDZE 39
8000 3500	← 302° 122° →	137°	ZONGU	1.3 NM to RWY 14	5.4 NM		
GP 3.00° TCH 50		1800					
CATEGORY	A	B	C	D	E		
LPV DA*		239/18	200		(200-½)		
LNAV/VNAV DA**		457/40	418		(500-¾)		
LNAV MDA***	500/24	461 (500-½)	500/50	461	(500-1)		
CIRCLING	760-1	713 (800-1)	860-2½ 813 (900-2½)	900-2¾ 853 (900-2¾)	1200-3 1153 (1200-3)		
						HIRL all Rwys TDZL/CL Rwy 14	

OAK HARBOR, WASHINGTON

48°21'N - 122°39'W

WHIDBEY ISLAND NAS (AULT FLD) (KNUW)

Amdt 5 31OCT24

RNAV (GPS) RWY 14

NW-1, 07 AUG 2025 to 04 SEP 2025

NW-1, 07 AUG 2025 to 04 SEP 2025