

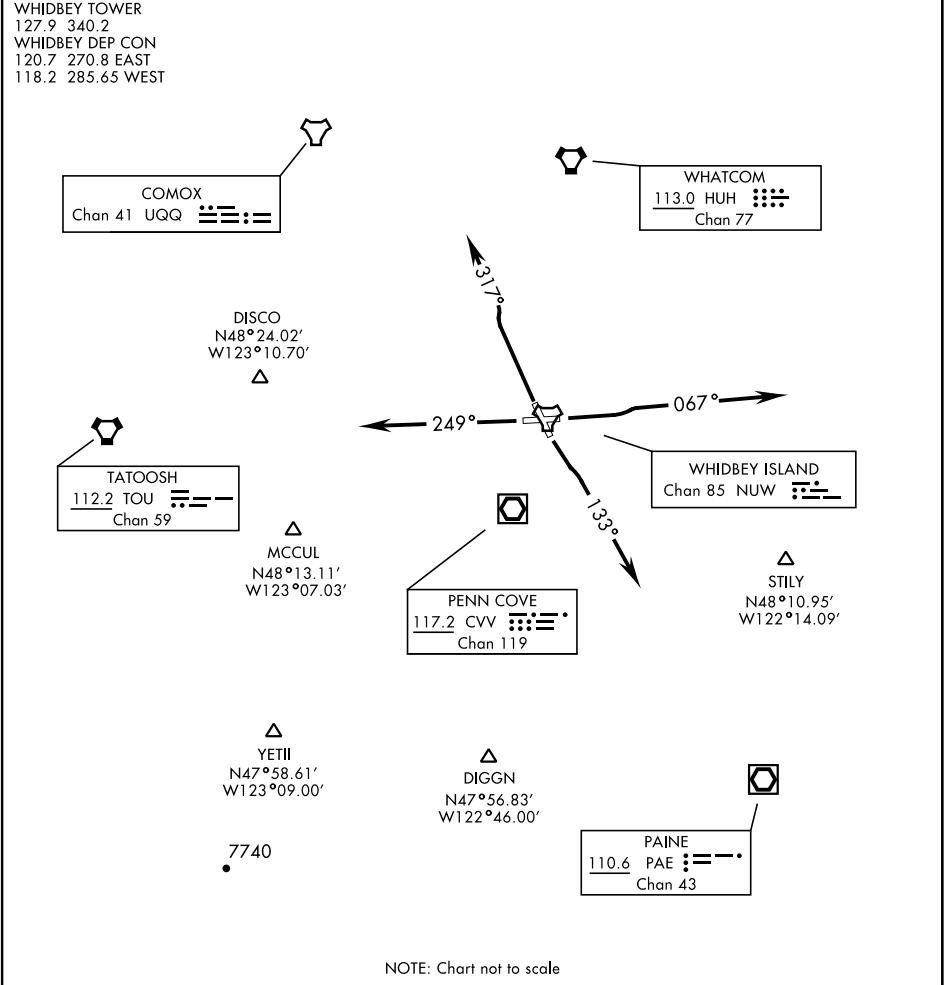
ATIS 134.15 281.5  
CLNC DEL 135.1 379.9  
GND CON 121.75 336.4  
WHIDBEY TOWER 127.9 340.2  
WHIDBEY DEP CON 120.7 270.8 EAST  
118.2 285.65 WEST

[USN]

| Rwy | Knots    | 60  | 120 | 180 | 240  | 300  | 360  |
|-----|----------|-----|-----|-----|------|------|------|
| 7   | V/V(fpm) | 270 | 540 | 810 | 1080 | 1350 | 1620 |
| 14  | V/V(fpm) | 254 | 508 | 762 | 1016 | 1270 | 1524 |

Minimum Climb Rate to 500

OAK HARBOR, WASHINGTON



▼

DEPARTURE ROUTE DESCRIPTION

All RWYS: If control instructions are not received by 10 DME of NUW TACAN, climb to 3000, intercept the NUW 11 DME ARC to join assigned route.

RWY 7: Climb to 2000 via heading 067°, then RADAR vectors to assigned route.

RWY 14: Climbing left turn to 2000 via heading 133°, then RADAR vectors to assigned route.

RWY 25: Climb to 2000 via heading 249°, then RADAR vectors to assigned route.

RWY 32: Climb to 2000 via heading 317°, then RADAR vectors to assigned route.