

OAK HARBOR, WASHINGTON

ILS or LOC/DME RWY 14

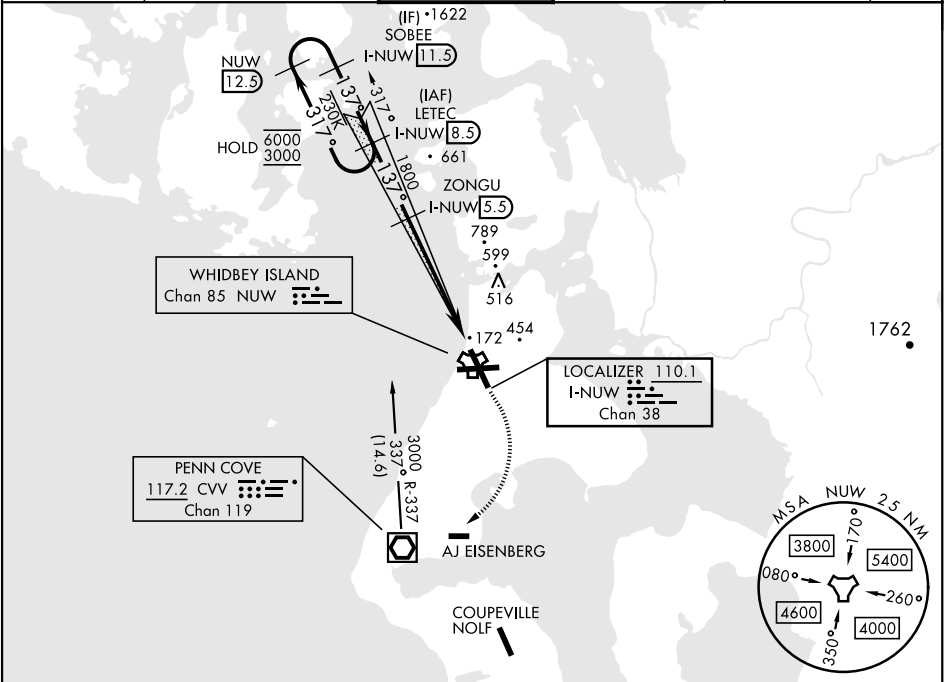
LOC/DME I-NUW <b>110.1</b> Chan <b>38</b>	APCH CRS <b>137°</b>	Rwy Idg <b>8000</b> TDZE <b>39</b> Arprt Elev <b>47</b>
---	-------------------------	---

[USN]

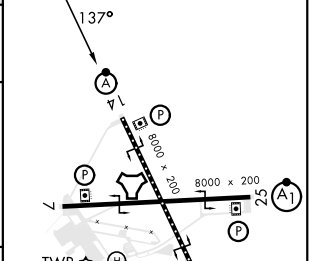
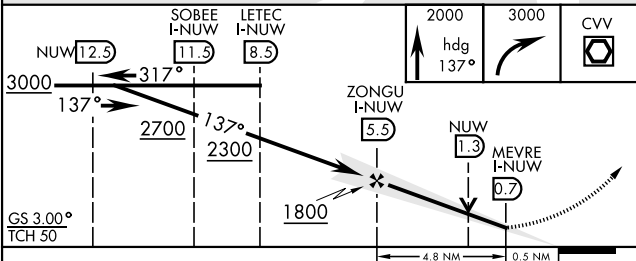
WHIDBEY ISLAND NAS (AULT FLD) (KNUW)

VOR, DME required. * When TDZ/CL lights inop, increase RVR to 24. When ALS inop, increase RVR to 40, vis to ¾ mile. ** When ALS inop, increase CAT AB RVR to 55, vis to 1 mile; CAT CDE RVR to 60, vis to 1½ miles.	ALSF-2 	MISSED APPROACH: Climb to 2000 via hdg 137°, then climbing right turn to 3000, direct CVV VOR/DME, then via CVV R-337 to LETEC and hold.
---	------------	--

ATIS <b>134.15 281.5</b>	WHIDBEY APP CON <b>120.7 270.8 (E)</b> <b>118.2 285.65 (W)</b>	WHIDBEY TOWER <b>127.9 340.2</b>	GND CON <b>121.75 336.4</b>	CLNC DEL <b>135.1 379.9</b>	ASR/PAR
-----------------------------	--	-------------------------------------	--------------------------------	--------------------------------	---------



EMERG SAFE ALT 100 NM 15,500	ELEV <b>47</b>	TDZE <b>39</b>
------------------------------	----------------	----------------



CATEGORY	A	B	C	D	E
S-ILS 14 *	239/18		200	(200-½)	
S-LOC 14 **	440/24	401 (400-½)	440/40	401 (400-¾)	
CIRCLING	760-1	713 (800-1)	860-2½ 813 (900-2½)	900-2¾ 853 (900-2¾)	1200-3 1153 (1200-3)

HIRL Rwy 7-25, 14-32  
TDZL/CL Rwy 14

OAK HARBOR, WASHINGTON

48°21'N-122°39'W

WHIDBEY ISLAND NAS (AULT FLD) (KNUW)

Amdt 2 31OCT24

ILS or LOC/DME RWY 14

NW-1, 07 AUG 2025 to 04 SEP 2025

NW-1, 07 AUG 2025 to 04 SEP 2025