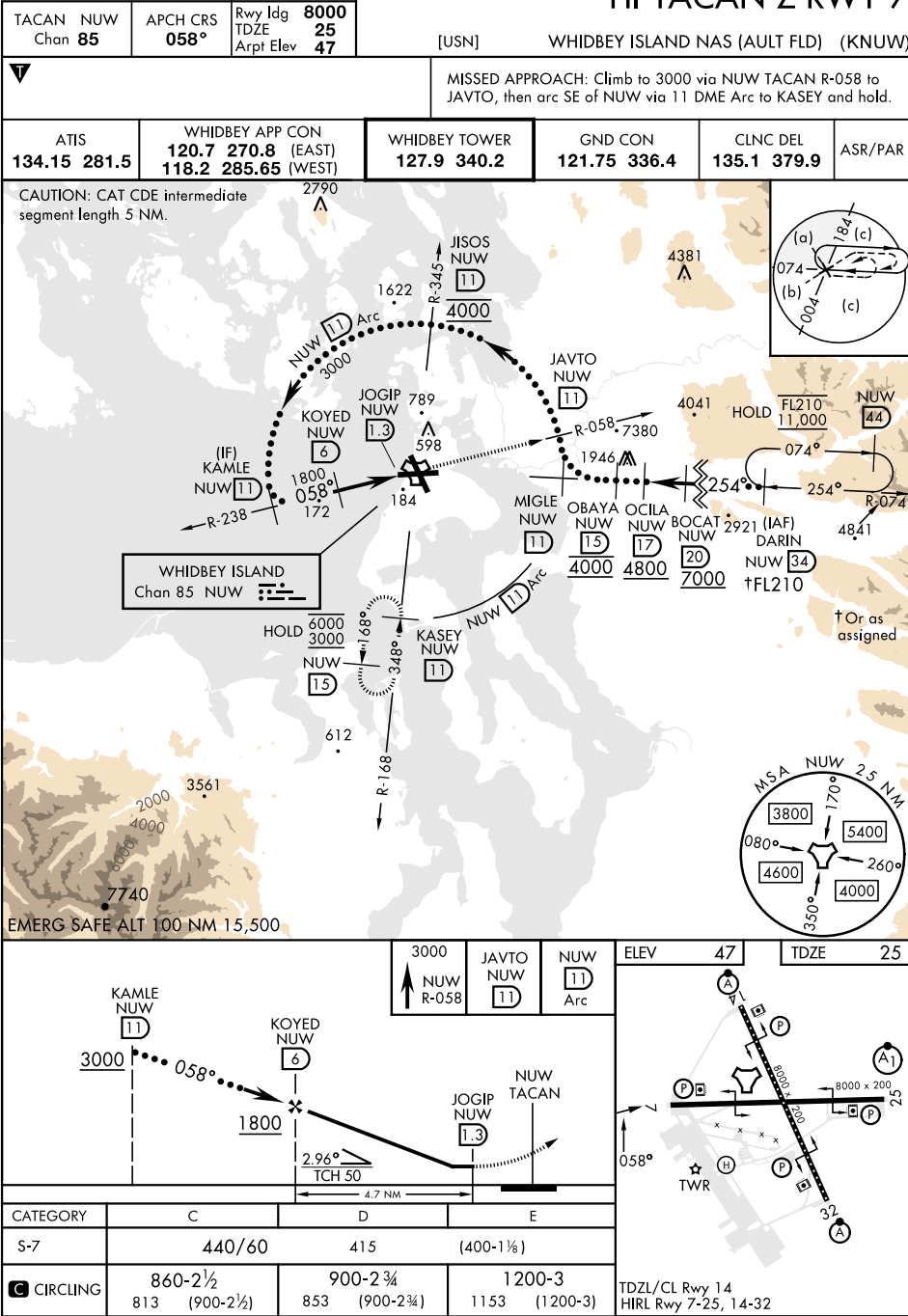




OAK HARBOR, WASHINGTON

24361

HI-TACAN Z RWY 7



NW-1, 07 AUG 2025 to 04 SEP 2025

NW-1, 07 AUG 2025 to 04 SEP 2025

OAK HARBOR, WASHINGTON

48°21'N-122°39'W

WHIDBEY ISLAND NAS (AULT FLD) (KNUW)

Amtd 4 31OCT24

HI-TACAN Z RWY 7

