




OAK HARBOR, WASHINGTON

HI-TACAN Z RWY 32

TACAN Chan 85	NUW 311°	APCH CRS 311°	Rwy Idg TDZE Arpt Elev	8000 47 47	[USN]	WHIDBEY ISLAND NAS (AULT FLD) (KNUW)
<div>  <p>* When ALS inop, increase CAT CDE vis to 1 3/4 miles.</p> </div>					<div>  <p>ALS-2</p> </div>	<div>  <p>MISSED APPROACH: Climb to 3000 via NUW TACAN R-308 to LUPEZ, then arc W of NUW via 1.1 DME Arc to KASEY and hold.</p> </div>

ATIS	WHIDBEY APP CON		WHIDBEY TOWER		GND CON		CLNC DEL		ASR/PAR
134.15 281.5	120.7 270.8	(EAST)	127.9 340.2		121.75 336.4		135.1 379.9		

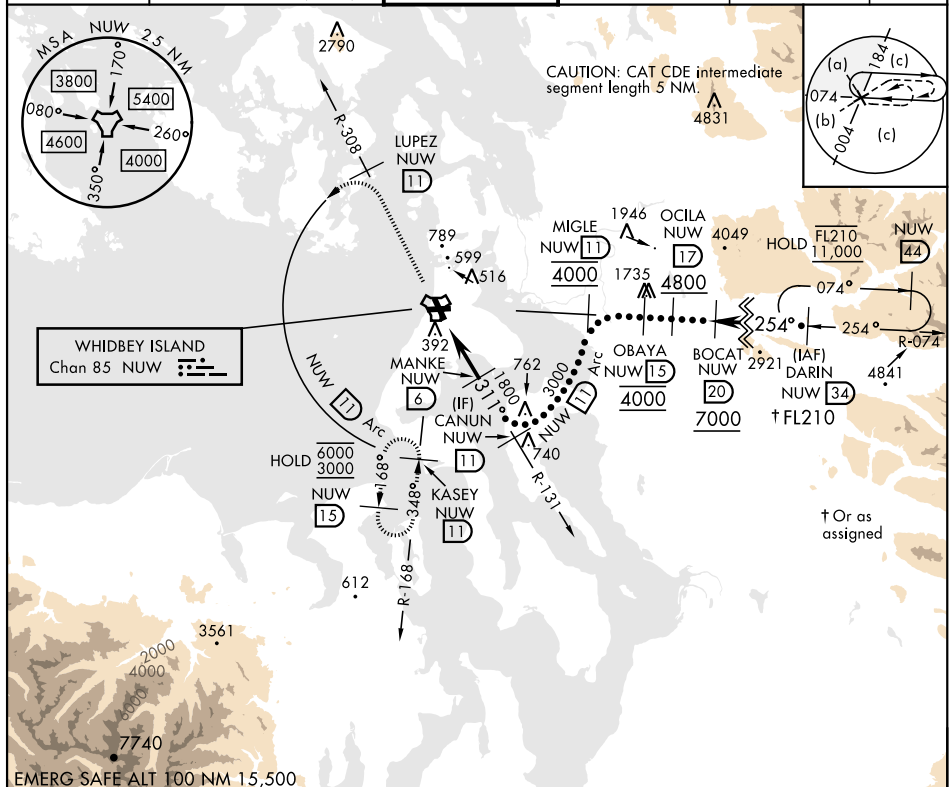


Figure 1-1 consists of two diagrams: a profile view and a plan view. The profile view shows the vertical profile of the approach to runway 14. It starts with a 3.20° climb gradient, followed by a 4.2 NM distance, and then a 1800 ft obstacle. The plan view shows the horizontal alignment of the approach, including the runway, taxiway, and various navigational aids.

OAK HARBOR, WASHINGTON

48°21'N-122°39'W WHIDBEY ISLAND NAS (AULT FLD) (KNUW)

Amdt 4 31OCT24

HI-TACAN Z RWY 32

NW-1, 07 AUG 2025 to 04 SEP 2025

NW-1, 07 AUG 2025 to 04 SEP 2025