

APP CRS	Rwy Idg	9817
272°	TDZE	469
	Apt Elev	491

RNAV (GPS) RWY 27
NEW YORK STEWART INTL (SWF)

RNP APCH.

T For uncompensated Baro-VNAV systems, LNAV/VNAV NA below
A -15°C or above 54°C.

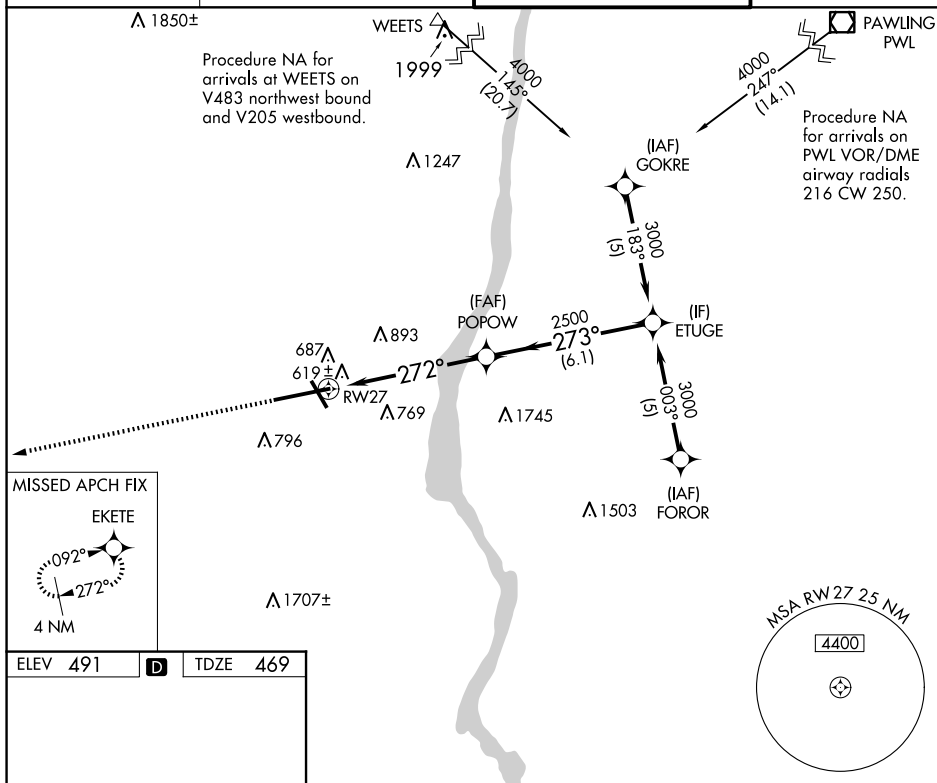
MISSED APPROACH: Climb to 3000 direct EKETE and hold.

ATIS
124.575

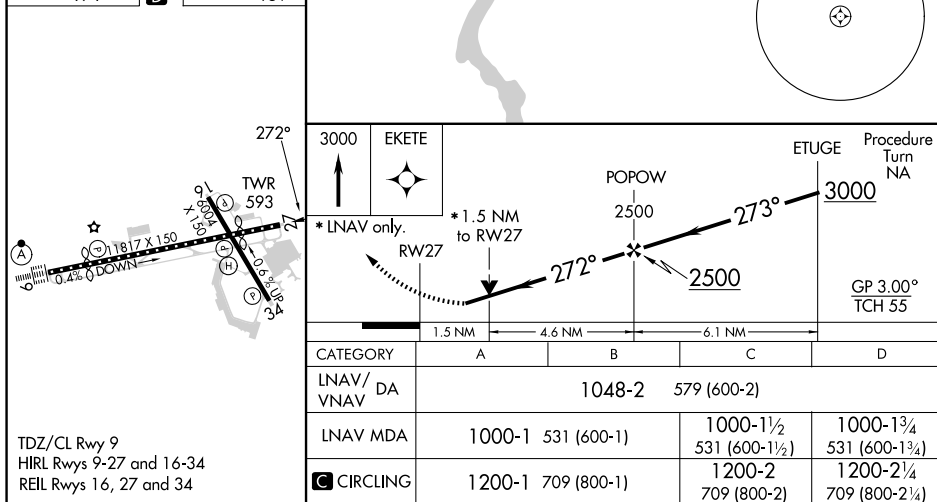
NEW YORK APP CON
132.75 363.1

STEWART TOWER
121.0 254.4

GND CON
121.9



ELEV 491	D	TDZE 469
----------	----------	----------



NEW YORK, NEW YORK

Amdt 1D 15AUG19

41°30'N-74°06'W

NEW YORK STEWART INTL (SWF)
RNAV (GPS) RWY 27

NE-2, 07 AUG 2025 to 04 SEP 2025