

LOC I-SWF	APP CRS	Rwy Idg	8817
110.1	092°	TDZE	482
		Apt Elev	491

ILS or LOC RWY 9

NEW YORK STEWART INTL (SWF)

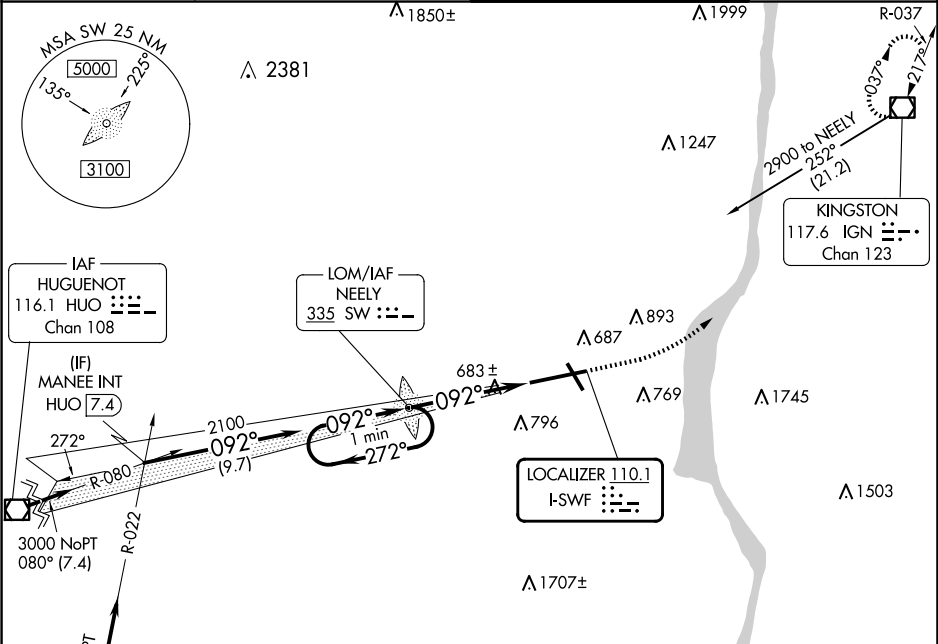
⚠

⚠

ALSF-2

MISSED APPROACH: Climb to 1200 then climbing left turn to 3000 direct IGN VOR/DME and hold.

ATIS 124.575	NEW YORK APP CON 132.75 363.1	STEWART TOWER 121.0 254.4	GND CON 121.9
-----------------	----------------------------------	------------------------------	------------------

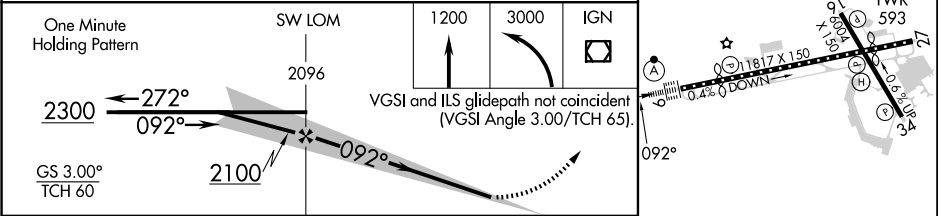


ELEV 491 TDZE 482

Procedure NA for arrivals at SAX  
VORTAC on airway radials 029 CW 060.

One Minute Holding Pattern  
2300  
272°  
092°  
2100  
GS 3.00° TCH 60  
SW LOM  
2096  
VGS1 and ILS glidepath not coincident (VGS1 Angle 3.00/TCH 65).  
4.8 NM  
1200  
3000  
IGN

TDZ/CL Rwy 9  
HIRL Rwy 9-27 and 16-34  
REIL Rwy 16, 27 and 34  
FAF to MAP 4.8 NM  
Knots 60 90 120 150 180  
Min:Sec 4:48 3:12 2:24 1:55 1:36



CATEGORY	A	B	C	D
S-ILS 9	682/18 200 (200-½)			
S-LOC 9	940/24 458 (500-½)		940/50 458 (500-1)	
CIRCLING	1200-1 709 (800-1)		1200-2 709 (800-2)	1200-2¼ 709 (800-2¼)

NE-2, 07 AUG 2025 to 04 SEP 2025

NE-2, 07 AUG 2025 to 04 SEP 2025