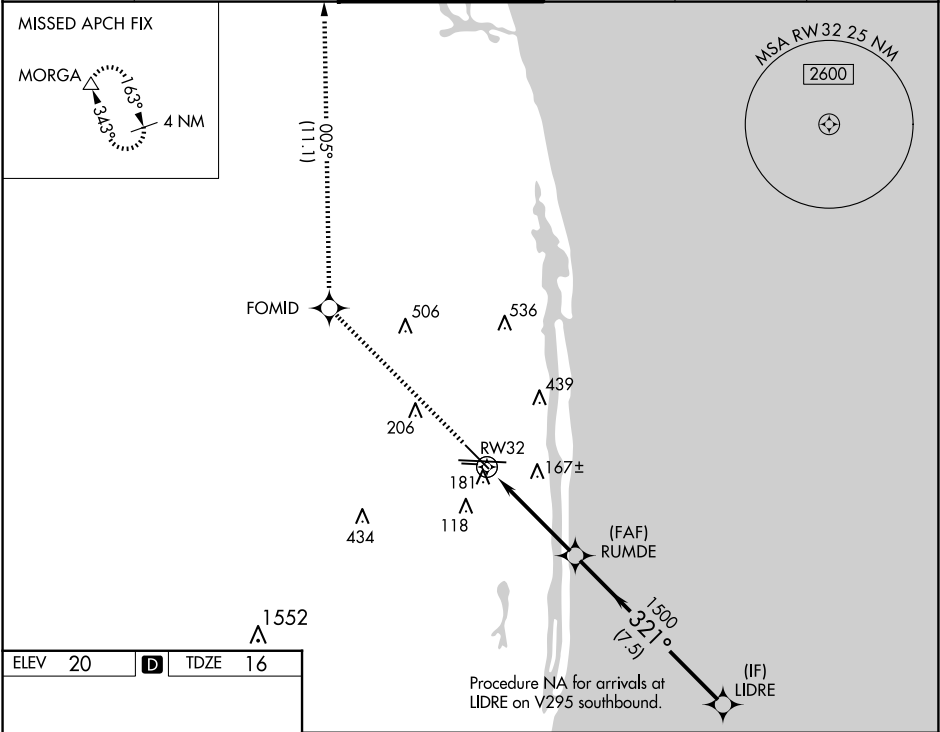


WAAS CH 62903 W32A	APP CRS 321°	Rwy Ldg TDZE 16 Apt Elev 20
--	------------------------	---

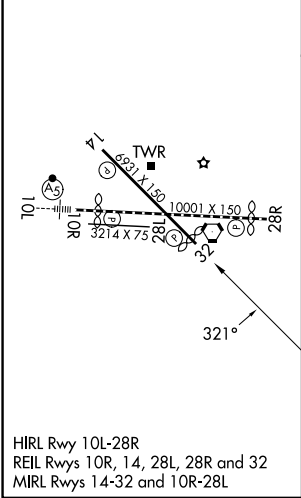
RNAV (GPS) Y RWY 32

PALM BEACH INTL (PBI)

RNP APCH - GPS.				MISSED APPROACH: Climb to 3000 direct FOMID and on track 005° to MORGA and hold.	
⚠ Circling to Rwy 10L NA at night. Rwy 32 helicopter visibility reduction below ¾ SM NA. ⚠ For uncompensated Baro-VNAV systems, LNAV/VNAV NA below 6°C or above 54°C.					
D-ATIS 123.75	PALM BEACH APP CON 128.3 317.4	PALM BEACH TOWER 119.1 257.8	GND CON 121.9 284.6	CLNC DEL 121.6 284.6	CPDLC



ELEV 20	D	TDZE 16
---------	----------	---------



3000	FOMID	MORGA	VGSi and RNAV glidepath not coincident (VGSi Angle 3.25/TCH 57).	
↑	↑ 005°	△	LIDRE	
RW32		1.1 NM to RW32	RUMDE 1500	LIDRE 3000
1.1 NM		3.4 NM	7.5 NM	GP 3.00° TCH 57
CATEGORY	A	B	C	D
LPV DA	266-¾		250 (300-¾)	
LNAV/VNAV DA	342-1		326 (400-1)	
LNAV MDA	440-1	424 (500-1)	440-1¼	424 (500-1¼)
C CIRCLING	560-1	540 (600-1)	740-2 720 (800-2)	780-2½ 760 (800-2½)

SE-3, 07 AUG 2025 to 04 SEP 2025

SE-3, 07 AUG 2025 to 04 SEP 2025