

APP CRS  
**279°**

Rwy Ldg  
TDZE  
**18**

Apt Elev  
**20**

**RNAV (GPS) X RWY 28R**

PALM BEACH INTL (PBI)

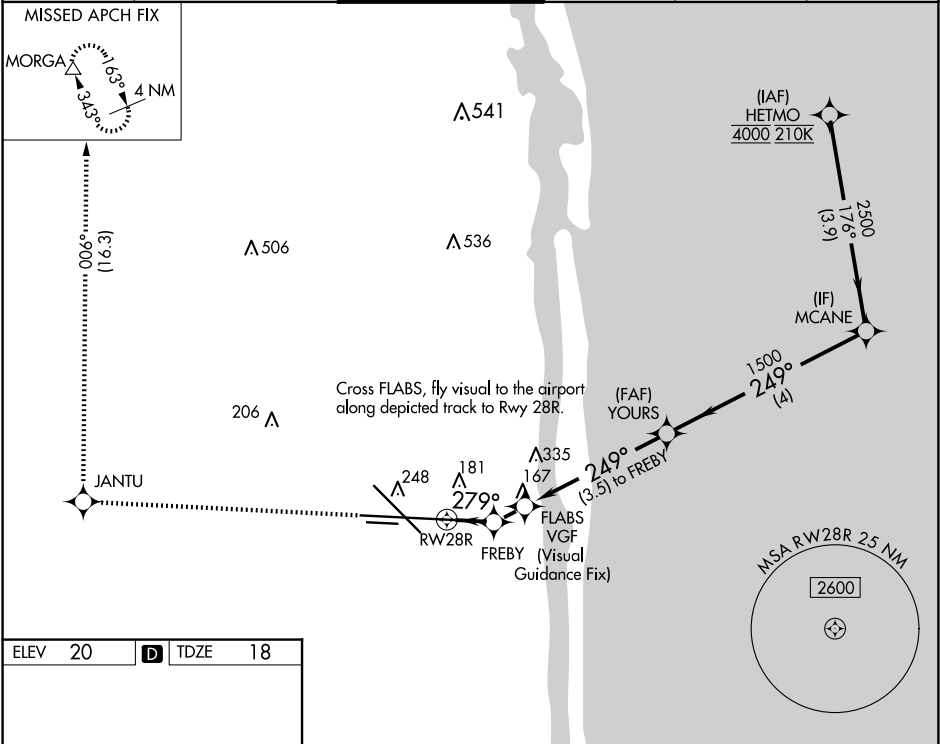
RNP APCH - GPS.

RADAR required.

▼

MISSED APPROACH: Climb to 3000 on the extended visual approach track to Rwy 28R and direct JANTU and on track 006° to MORGA and hold.

D-ATIS <b>123.75</b>	PALM BEACH APP CON <b>128.3 317.4</b>	PALM BEACH TOWER <b>119.1 257.8</b>	GND CON <b>121.9 284.6</b>	CLNC DEL <b>121.6 284.6</b>	CPDLC
-------------------------	--	--	-------------------------------	--------------------------------	-------



ELEV 20 D TDZE 18

HIRL Rwy 10L-28R  
REIL Rwys 10R, 14, 28L, 28R and 32  
MIRL Rwys 14-32 and 10R-28L

3000 JANTU tr 006° MORGA

VGSI and descent angles not coincident (VGSI Angle 3.00/TCH 70).

Turns required in the visual segment.

Fly visual to airport, 279° 0.9 NM.

RW28R FREBY FLABS YOURS MCANE

279° 249° 2500

3.10° TCH 60

0.9 NM 3.5 NM 4 NM

CATEGORY	A	B	C	D
LNAV MDA	580-1¾ 562 (600-1¾)			