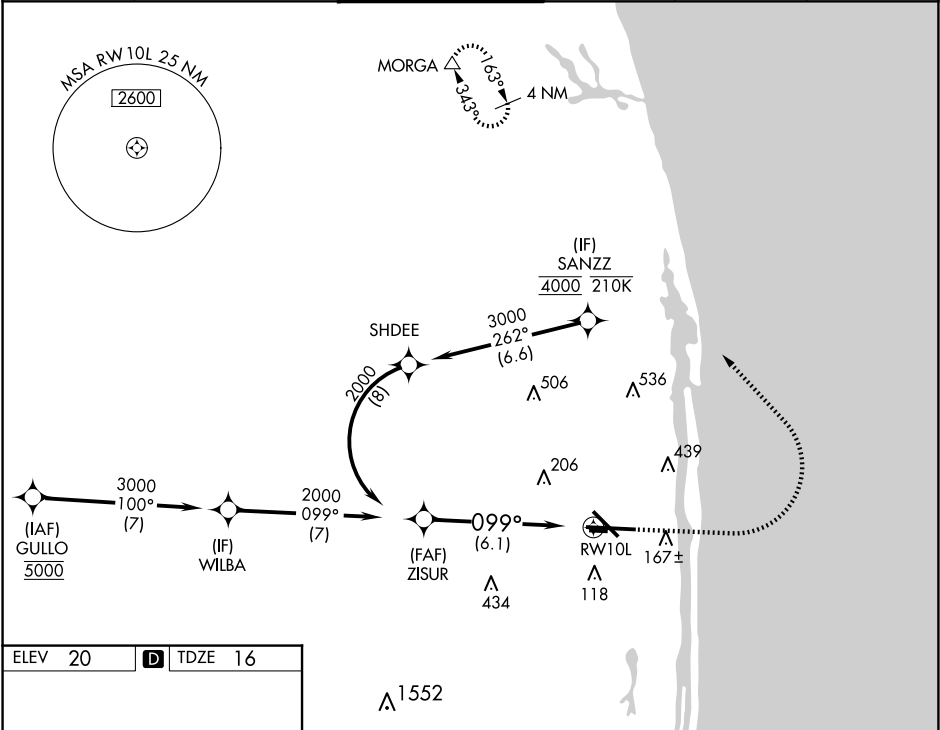


APP CRS	Rwy Ldg	8151
099°	TDZE	16
	Apt Elev	20

RNAV (RNP) Z RWY 10L
PALM BEACH INTL (PBI)

RNP AR APCH - GPS.		MALSR	MISSED APPROACH: Climb to 1000 then climbing left turn to 3000 direct MORGA and hold.	
For uncompensated Baro-VNAV systems, procedure NA below 6°C or above 54°C.				
D-ATIS	PALM BEACH APP CON	PALM BEACH TOWER	GND CON	CLNC DEL
123.75	128.3 317.4	119.1 257.8	121.9 284.6	121.6 284.6
			CPDLC	



ELEV 20 **D** TDZE 16

HIRL Rwy 10L-28R
REIL Rws 10R, 14, 28L, 28R and 32
MIRL Rws 14-32 and 10R-28L

VGSI and RNAV glidepath not coincident (VGSI Angle 3.00/TCH 68).

GP 3.00°
TCH 52

1000 3000 MORGA

CATEGORY	A	B	C	D
RNP 0.30 DA	355/26 339 (400-1/2)			

AUTHORIZATION REQUIRED

SE-3, 07 AUG 2025 to 04 SEP 2025

SE-3, 07 AUG 2025 to 04 SEP 2025