

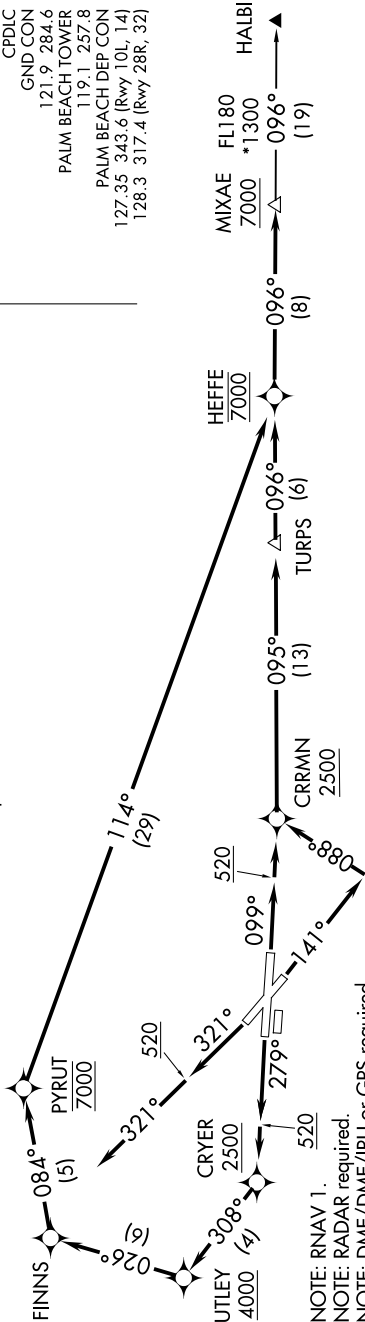
SE-3, 07 AUG 2025 to 04 SEP 2025

TOP ALTITUDE:
RWY 10L, 14, 28R: 7000
RWY 32: ASSIGNED BY ATC

TAKEOFF MINIMUMS:

Rwys 10L, 14, 28R, 32: Standard with minimum
climb of 500' per NM to 520.

D-ATIS
123.75
CLNC DEL
121.6 284.6
CPDLC
GND CON
121.9 284.6
PALM BEACH TOWER
119.1 257.8
PALM BEACH DEP CON
127.35 343.6 (Rwy 10L, 14)
128.3 317.4 (Rwy 28R, 32)



NOTE: RNAV 1.
NOTE: RADAR required.
NOTE: DME/DME/IRU or GPS required.
NOTE: Turbo-jets only.
NOTE: If unable to accept minimum climb rates, advise ATC on initial contact.

NOTE: Chart not to scale.

DEPARTURE ROUTE DESCRIPTION

TAKEOFF RUNWAY 10L: Climb on heading 099° to 520, then direct to cross CRRMN at or above 2500, then on track 095° to TURPS, then on track 096° to cross HEFFE at and maintain 7000, thence. . . .
TAKEOFF RUNWAY 14: Climb on heading 141° to intercept course 088° to cross CRRMN at or above 2500, then on track 095° to TURPS, then on track 096° to cross HEFFE at and maintain 7000, thence. . . .
TAKEOFF RUNWAY 28R: Climb on heading 279° to 520, then direct to cross CRYER at or above 2500, then on track 308° to cross UTLEY at or above 4000, then on track 026° to FINNS then on track 084° to cross PYRUT at 7000, then on track 114° to cross HEFFE at and maintain 7000, thence. . . .
... on track 096° to cross MIXAE at or above 7000, then on transition. Expect clearance to filed altitude within 10 minutes after departure.
TAKEOFF RUNWAY 32: Climb on heading 321° to 520, then on heading 321° or assigned by ATC for vectors to cross HEFFE at 7000, thence. . . .
... on track 096° to cross MIXAE at or above 7000, then on transition. Maintain ATC assigned altitude, expect clearance to filed altitude within 10 minutes after departure.

HALBI TRANSITION (MIXAE3.HALBI)

SE-3, 07 AUG 2025 to 04 SEP 2025