

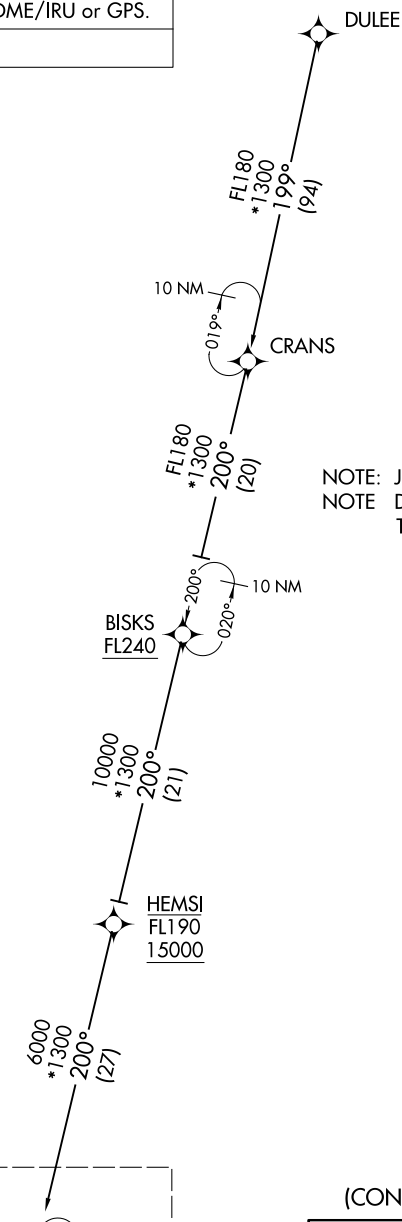
CLMNT TWO ARRIVAL (RNAV) Transition Routes

WEST PALM BEACH, FLORIDA

RNAV 1 - DME/DME/IRU or GPS.

RADAR required.

PALM BEACH APP CON
124.6 317.4
F45 CTAF
123.075
PBI D-ATIS
123.75



NOTE: Jet aircraft only.

NOTE Do not file CRANS, BSKS Transitions-
To be assigned by ATC

NOTE: Chart not to scale.

(CONTINUED ON FOLLOWING PAGE)

BISKS TRANSITION (BISKS.CLMNT2)
CRANS TRANSITION (CRANS.CLMNT2)
DULEE TRANSITION (DULEE.CLMNT2)

See following page
for arrival routes.

CLMNT	
<u>11 000</u>	<u>250K</u>
9000	

CLMNT TWO ARRIVAL (RNAV) Transition Routes

WEST PALM BEACH, FLORIDA

(CLMNT.CLMNT2) 19MAY22

SE-3, 07 AUG 2025 to 04 SEP 2025

SE-3, 07 AUG 2025 to 04 SEP 2025