

WAAS CH 82614 W35A	APP CRS 354°	Rwy Idg TDZE 1745 Apt Elev 1749
--	------------------------	---

RNAV (GPS) RWY 35
WATERTOWN RGNL (ATY)

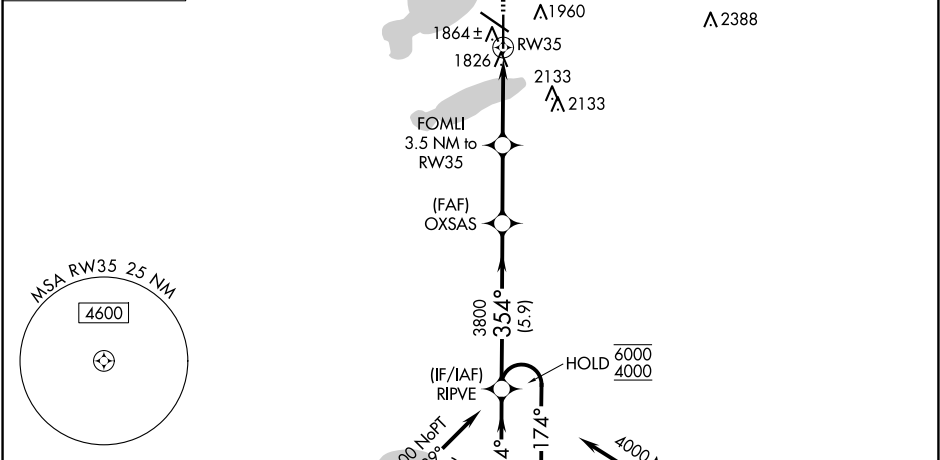
RNP APCH - GPS. ⚠ For uncompensated Baro-VNAV systems, LNAV/VNAV NA below -21°C or above 54°C. For inop ALS, increase LNAV Cat C/D visibility to 1½ SM.	MALSR AS	MISSED APPROACH: Climb to 3600 direct BOBDE and hold.
--	-------------	---

ASOS 126.625	MINNEAPOLIS CENTER 128.5 306.2	UNICOM 123.05 (CTAF) 0
------------------------	--	----------------------------------

MISSED APCH FIX

4 NM

BOBDE



ELEV 1749 D TDZE 1745

REIL Rwy 12, 17 and 30

HIRL Rwy 17-35

MIRL Rwy 12-30

354°

--	--	--	--