

WATERTOWN, SOUTH DAKOTA

AL-444 (FAA)

23222

WAAS CH 50305 W30A	APP CRS 299°	Rwy Idg 6898 TDZE 1735 Apt Elev 1749
--	------------------------	---

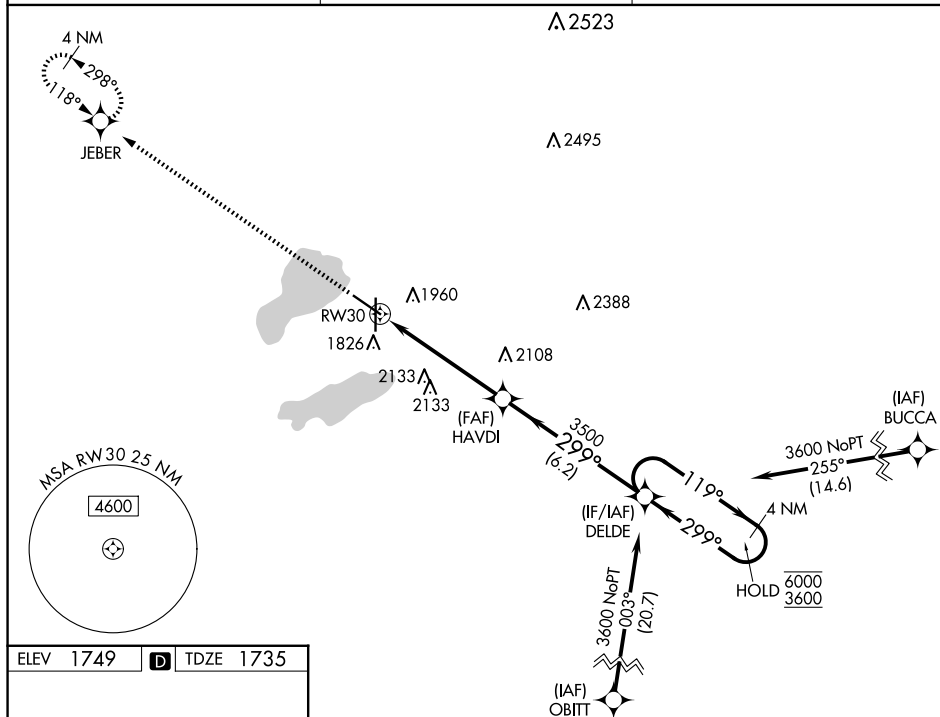
RNAV (GPS) RWY 30
WATERTOWN RGNL (ATY)

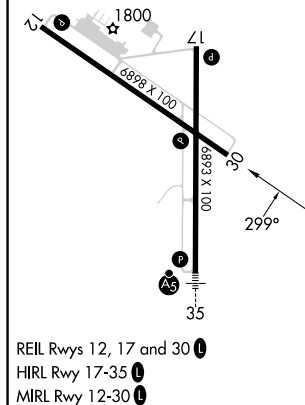
RNP APCH - GPS.

T For uncompensated Baro-VNAV systems, LNAV/VNAV
A NA below -18°C or above 54°C.

MISSED APPROACH: Climb to 3600 direct JEBER and hold.

ASOS 126.625	MINNEAPOLIS CENTER 128.5 306.2	UNICOM 123.05 (CTAF) 0
------------------------	--	----------------------------------





VGS1 and RNAV glidepath not coincident
(VGS1 Angle 3.00/TCH 34).

4 NM Holding Pattern

119° → 6000
← 299° 3600

GP 3.00°
TCH 45

HAUDI 3500

1.9 NM to RW30

1.9 NM

3.5 NM

6.2 NM

DELDE

3600

3500

299°

119°

RW30

JEBER 3600

3600

WATERTOWN, SOUTH DAKOTA

Amdt 1B 29DEC22

44°55'N-97°09'W

WATERTOWN RGNL (ATY)
RNAV (GPS) RWY 30

NC-1, 07 AUG 2025 to 04 SEP 2025

NC-1, 07 AUG 2025 to 04 SEP 2025