

WAAS
CH **53405**
W12A

APP CRS
118°

Rwy Idg
TDZE
Apt Elev

6898
1749
1749

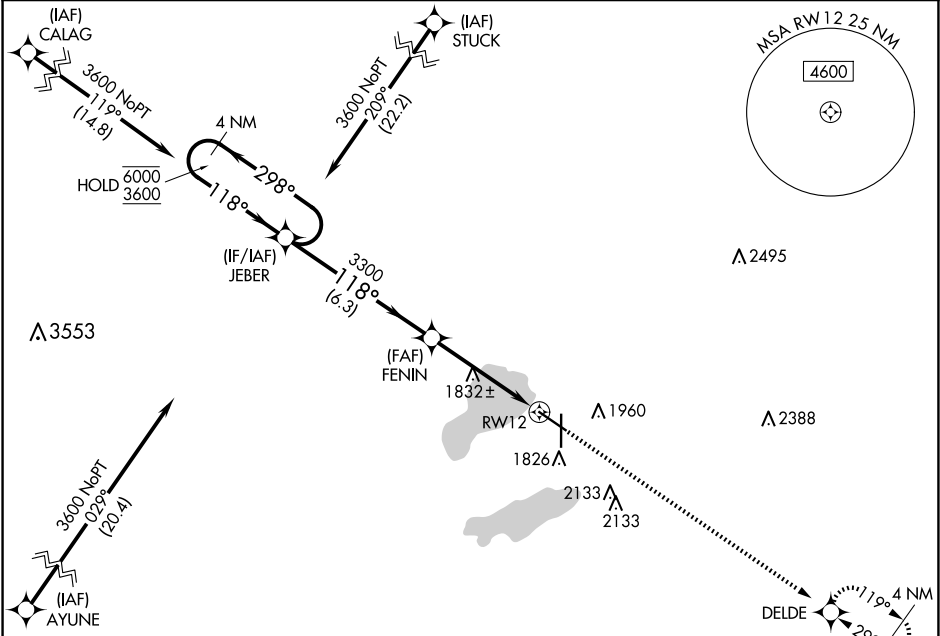
RNAV (GPS) RWY 12
WATERTOWN RGNL (ATY)

RNP APCH - GPS.

Rwy 12 helicopter visibility reduction below $\frac{3}{4}$ SM NA.
For uncompensated Baro-VNAV systems, LNAV/VNAV NA below -18°C or above 54°C.

MISSED APPROACH: Climb to 3600 direct DELDE and hold.

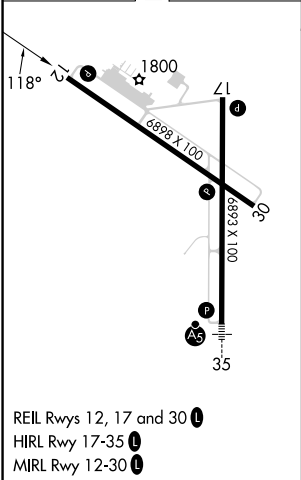
ASOS 126.625	MINNEAPOLIS CENTER 128.5 306.2	UNICOM 123.05 (CTAF) 0
------------------------	--	----------------------------------



ELEV 1749

D

TDZE 1749



4 NM Holding Pattern				3600	DELDE
<div><div>6000</div><div>3600</div></div> <div><div>←298°</div><div>118°→</div></div>					
GP 3.00° TCH 48					
<div><div>3300</div><div>3300</div></div> <div><div>118°</div><div>118°</div></div>					
6.3 NM				3.7 NM	1 NM
CATEGORY	A	B	C	D	
LPV DA	2021-7 $\frac{7}{8}$ 272 (300-7 $\frac{7}{8}$)				
LNAV/VNAV DA	2076-1 327 (400-1)				
LNAV MDA	2100-1 351 (400-1)				
<div>C</div> CIRCLING	2260-1 511 (600-1)	2500-2 $\frac{1}{4}$ 751 (800-2 $\frac{1}{4}$)		2500-2 $\frac{1}{2}$ 751 (800-2 $\frac{1}{2}$)	