

### TAKEOFF MINIMUMS:

Rwy 1: Standard with minimum climb of 825' per NM to 600.  
Rwys 15, 19: Standard with minimum climb of 500' per NM to 515.  
Rwy 33: Standard with minimum climb of 540' per NM to 640.

D-ATIS  
1132.65  
CLNC D  
1128.25  
CPDLC  
GND CC  
1121.7  
WASHINGTON  
1119.1  
POTOMAC  
1118.95

WASHINGTON TOWER  
119.1 257.6  
POTOMAC DEP CON  
118.95 257.2

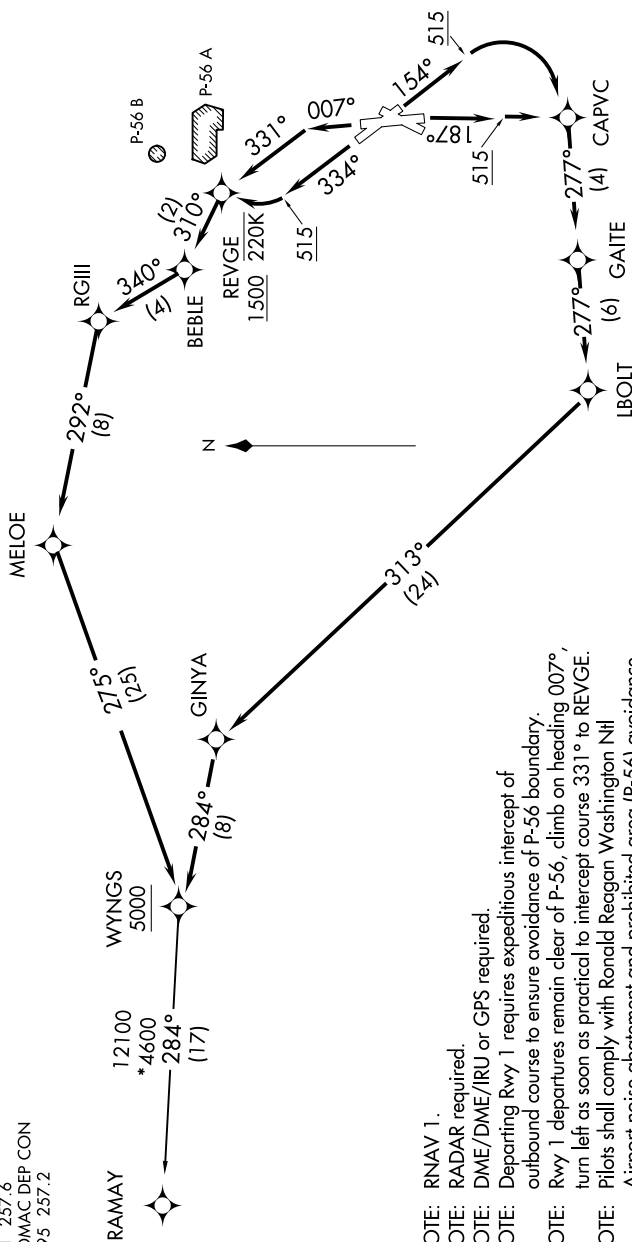
## WYNGS FIVE DEPARTURE (RNAV)

(WYNGS5.WYNGS) 31DEC20

WASHINGTON, DC

RONALD REAGAN WASHINGTON NTL (DCA)

**TOP ALTITUDE:**  
**5000**



(NARRATIVE ON FOLLOWING PAGE)

NOTE: Chart not to scale.

NE-3, 07 AUG 2025 to 04 SEP 2025