

TIKEE FOUR ARRIVAL (RNAV)

WASHINGTON, DC

NE-3, 07 AUG 2025 to 04 SEP 2025

POTOMAC APP CON 120.45 306.925 DCA D-ATIS	RNAV 1 - DME/DME/IRU or GPS. RADAR required.
---	---

ADW D-ATIS
133.675 251.05
*DAA ATIS
128.175

KESSEL
ESL
FL190

NOTE: Procedure available to all type aircraft landing the following airports: CJR, HWY, HEF, RMN, EZF, NYG.

NOTE: Props or Turboprop aircraft only landing the following airports: DAA, 2W5, VKX, W00, DCA, ADW.

ARRIVAL ROUTE DESCRIPTION

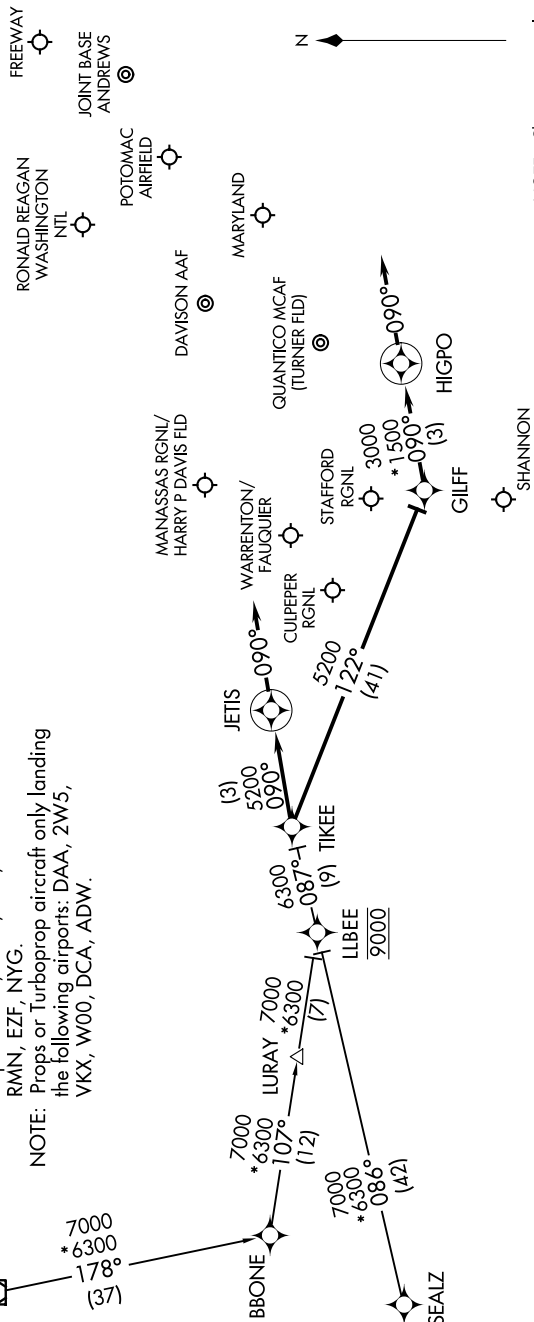
BBONE TRANSITION (BBONE.TIKEE4):

KESSEL TRANSITION (ESL.TIKEE4):

SEAL7 TRANSITION (SEAL7 TIKFF4).

All aircraft types landing HEF/NYG/RMN/HWY/CJR/EZF:
From TIKEE on track 090° to JETIS, then on heading 090° or as
assigned by ATC. Expect RADAR vectors to final approach course.

Props and Turboprop aircraft landing DAA/W00/VKX/ADW/
2W5/DCA: From TKEE on track 122° to GILFF, then on
track 090° to HGPO, then on heading 090° or as assigned by
Expect RADAR vectors to final approach course.



NOTE: Chart not to scale

NE-3. 07 AUG 2025 to 04 SEP 2025

TIKEE FOUR ARRIVAL (RNAV)

WASHINGTON, DC