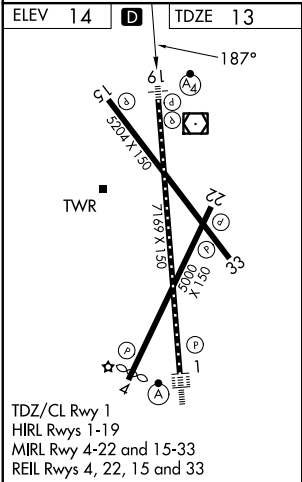
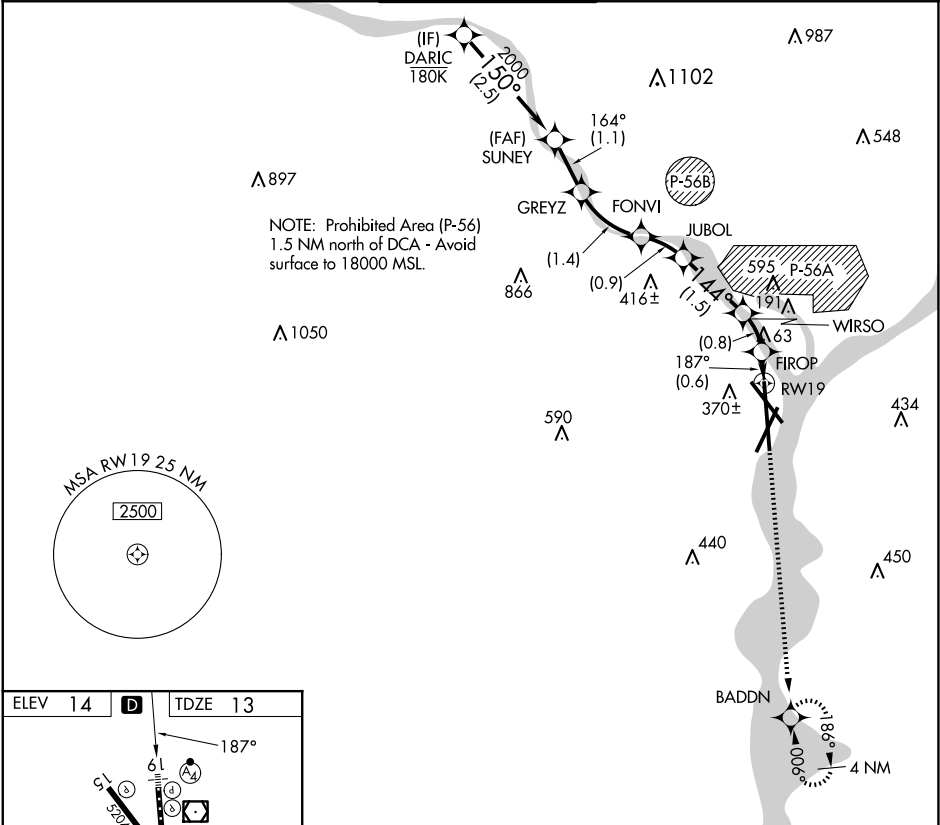


APP CRS 187°	Rwy Ldg 6869	RNAV (RNP) Z RWY 19				
	TDZE 13	RONALD REAGAN WASHINGTON NTL (DCA)				
	Apt Elev 14					
RNP AR APCH - GPS.		MALSF	MISSED APPROACH: Climb to 3000 on the final approach track to RW19 then direct BADDN and hold, continue climb-in-hold to 3000.			
Inop table does not apply. For uncompensated Baro-VNAV systems, procedure NA below -8°C or above 54°C.						
D-ATIS 132.65	POTOMAC APP CON 119.85 239.25 (WEST/SOUTH) 124.2 360.8 (EAST)	WASHINGTON TOWER 119.1 257.6	GND CON 121.7 257.6	CLNC DEL 128.25	CPDLC	



DARIC	SUNEY	GREYZ	FONVI	JUBOL	WIRSO	FIROP	Final App tr to RW19	BADDN
2700	2000	1666	1226	954	492	241		
GP 3.00° TCH 50								
2.5 NM	1.1 NM	1.4 NM	0.9 NM	1.5 NM	0.8	0.6 NM		
CATEGORY	A	B	C	D				
RNP 0.11 DA		491/60	478 (500-1¼)					
RNP 0.30 DA		550-1½	537 (600-1½)					
AUTHORIZATION REQUIRED								

NE-3, 07 AUG 2025 to 04 SEP 2025

NE-3, 07 AUG 2025 to 04 SEP 2025