

APP CRS 007°	Rwy Ldg 6869 TDZE 14 Apt Elev 14
------------------------	---

RNAV (RNP) RWY 1

RONALD REAGAN WASHINGTON NTL (DCA)

T For uncompensated Baro-VNAV systems, procedure NA below -10°C (14°F) or above 48°C (120°F). RF required. GPS required. Missed approach requires RNP less than 1.0. For inop ALS, increase RNP 0.30 all Cats visibility to 1¾ mile.

ALSF-2



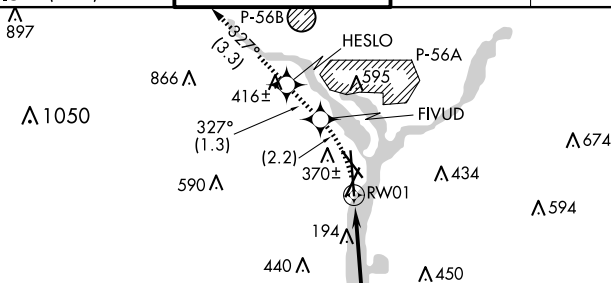
MISSED APPROACH: (Do not exceed 185K until FIVUD) Climb to 2200 left turn to FIVUD and on track 327° to HESLO and on track 327° to GTN NDB and hold.

D-ATIS 132.65	POTOMAC APP CON		WASHINGTON TOWER		GND CON		CLNC DEL	CPDLC
119.85	239.25	(WEST/SOUTH)	119.1	257.6	121.7	257.6	128.25	

MISSED APCH FIX



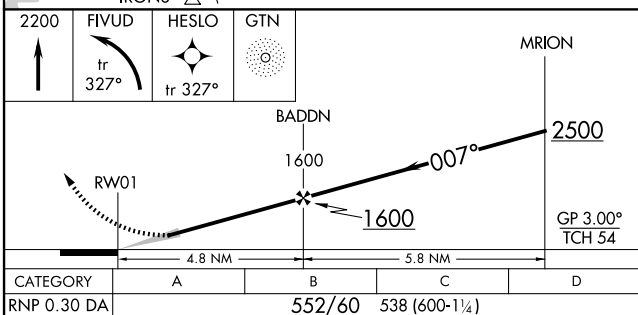
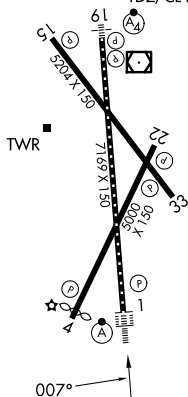
GEORGETOWN
GTN



Prohibited area (P-56) 1.5 NM north of DCA- avoid surface to 18000 MSI.

ELEV	14	D	TDZE	14
------	----	----------	------	----

REIL Rlys 4, 22, 15 and 33
MIRL Rly 4-22 and 15-33
HIRL Rlys 1-19
TDZ/CL Rly 1



AUTHORIZATION REQUIRED